

Exhibit A

Description of Interconnection Facilities for Mathews Avenue Substation:

Mathews Avenue is an electrical substation owned by the Village of Solvay with a maximum rating of 144 MVA located at Mathews Avenue, Village of Solvay, New York.

National Grid Interconnection Facilities:

Line #12 tap – All facilities on the line (jaw) side of the switch located on structure #8-1 up to and including the insulators on the station take-off structure at National Grid's Geres Lock substation

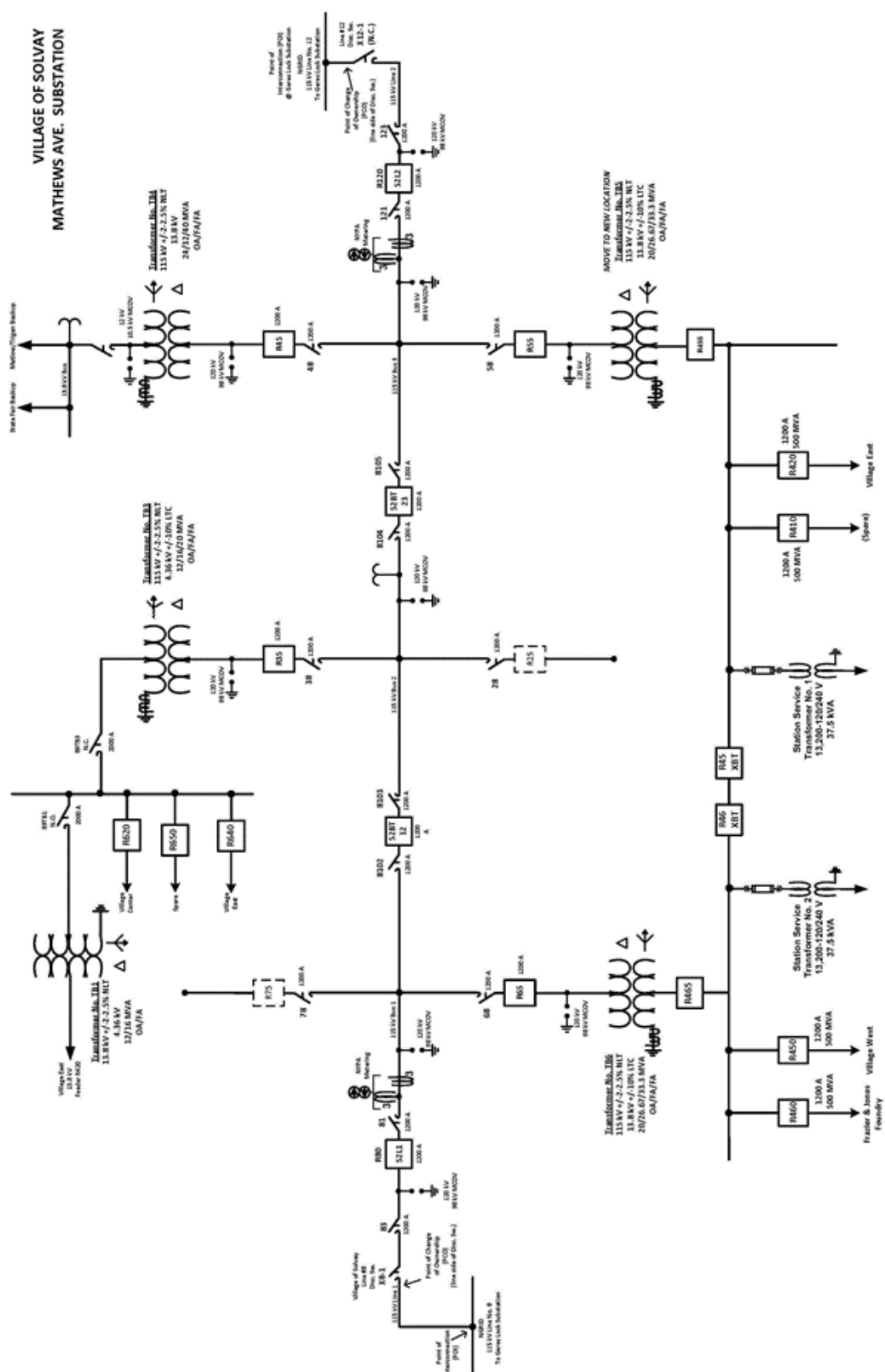
Line #8 tap – All facilities on the line (jaw) side of the switch located on structure #454.5-1 up to and including the insulators on National Grid structure #454.5 on National Grid's transmission line #8.

Solvay Interconnection Facilities:

Line #12 tap – Includes the switch and switch pole structure #8-1 and all facilities on the station side of that switch back to Solvay's Mathews Avenue Substation.

Line #8 tap – Includes the switch and switch pole structure #454.5-1 and all facilities on the station side of that switch back to Solvay's Mathews Avenue Substation.

One-Line Diagram for Mathews Avenue Substation:



Description of Interconnection Facilities for Lakeland Substation:

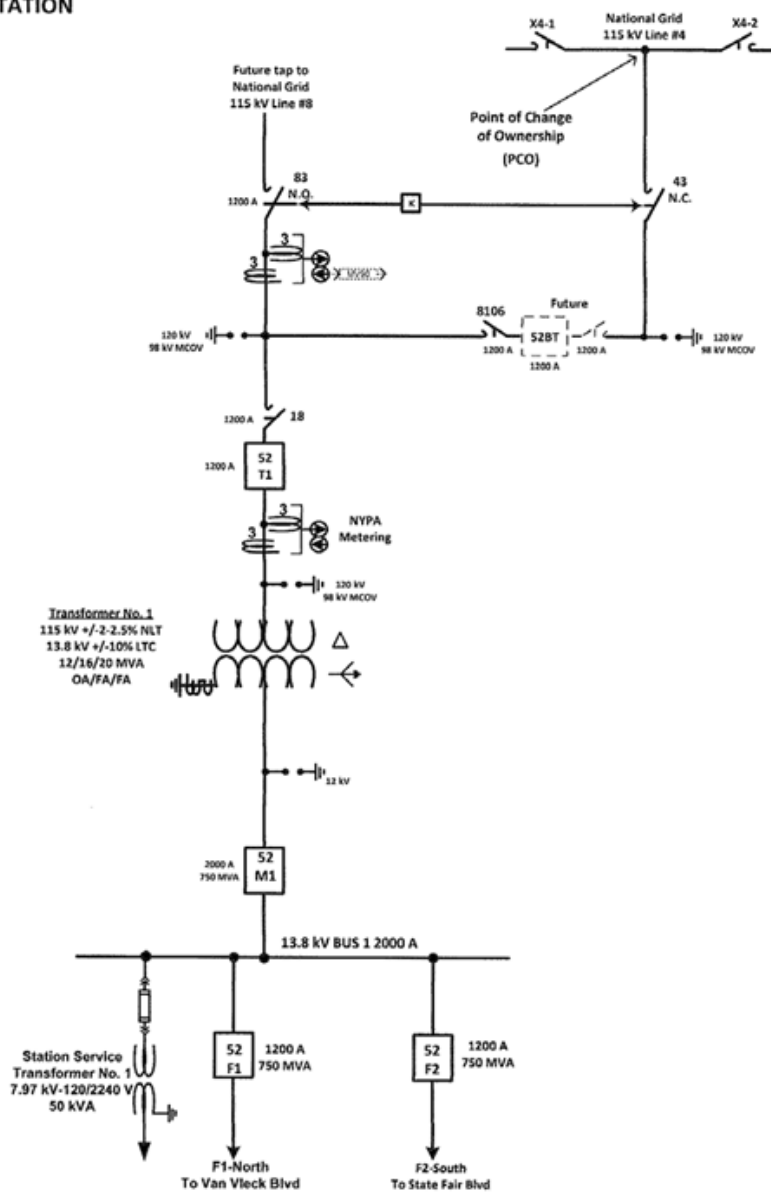
Lakeland substation is an electrical substation owned by the Village of Solvay with a maximum rating of 20 MVA and located in the Town of Geddes, County of Onondaga, New York.

National Grid Interconnection Facilities:

All facilities including the dead-end insulators on the line (jaw) side of the switching structure up to and including the dead-end insulators at the Interconnection Point on National Grid's #4 transmission line.

Solvay Interconnection Facilities:

All facilities on the station side of the Delivery Point from and including the disconnect switch and switch pole on the tap line feeder back to Solvay's Lakeland Substation.



Description of Interconnection Facilities for Industrial Substation:

Industrial substation is an electrical substation owned by the Village of Solvay with a maximum rating of 120 MVA located at Bridge Street, Village of Solvay, New York.

National Grid Interconnection Facilities:

Line #14 tap - All facilities up to and including the dead-end insulators on the line (jaw) side of switch X14-2 on switch pole #1-1 (Delivery Point) back to the dead-end insulators at the Interconnection Point (Pole #1) on National Grid's Line #14.

Line #2 tap – All facilities on the line side of switch X2-1 from and including the switch and switch pole #459-3 (Delivery Point) back to the dead-end insulators at the Interconnection Point (Pole #459) on National Grid's Line #2.

Solvay Interconnection Facilities:

Line #14 feeder – All facilities on the station side of the Delivery Point from and including switch X 14-2 and switch pole #1-1 back to Solvay's Industrial Station.

Line #2 – All facilities up to and including the dead-end insulators on the station side of the Delivery Point, not including the National Grid owned switch or switch pole, back to Solvay's Industrial Station.

One-line Diagram for Industrial Substation:

