

FERC rendition of the electronically filed tariff records in Docket No. ER19- -000

Filing Data:

CID: C000038

Filing Title: Section 205 NYPA-RGE LGIA No. 2433 for RARP

Company Filing Identifier: 1511

Type of Filing Code: 10

Associated Filing Identifier:

Tariff Title: NYISO Agreements

Tariff ID: 58

Payment Confirmation: N

Suspension Motion:

Tariff Record Data:

Record Content Description: Agreement No. 2433

Tariff Record Title: LGIA between NYPA and RG&E for RARP Interconnection

Record Version Number: 246

Option Code: A

Tariff Record ID: 246

Tariff Record Collation Value: 8083100

Tariff Record Parent Identifier: 2

Proposed Date: 2019-08-12

Priority Order: 500

Record Change Type: New

Record Content Type: 2

Associated Filing Identifier:

August 7,
2019

Service Agreement No. 2433

CUI//CEII – REDACTED VERSION
CUI//CEII – REDACTED VERSION

Service Agreement No. 2433

TRANSMISSION FACILITY INTERCONNECTION AGREEMENT

by and between

Rochester Gas and Electric Corporation

And

New York Power Authority

Dated as of ___, 20__

TABLE OF CONTENTS

ARTICLE 1. DEFINITIONS	1
ARTICLE 2. EFFECTIVE DATE, TERM AND TERMINATION	6
ARTICLE 3. REGULATORY FILINGS	8
ARTICLE 4. SCOPE OF INTERCONNECTION SERVICE.....	8
ARTICLE 5. ATTACHMENT FACILITIES ENGINEERING, PROCUREMENT, AND CONSTRUCTION	9
ARTICLE 6. TESTING AND INSPECTION	23
ARTICLE 7. METERING	24
ARTICLE 8. COMMUNICATIONS.....	25
ARTICLE 9. OPERATIONS.....	26
ARTICLE 10. MAINTENANCE	31
ARTICLE 11. PERFORMANCE OBLIGATION	32
ARTICLE 12. INVOICE	33
ARTICLE 13. EMERGENCIES.....	34
ARTICLE 14. REGULATORY REQUIREMENTS AND GOVERNING LAW	36
ARTICLE 15. NOTICES.....	36
ARTICLE 16. FORCE MAJEURE	38
ARTICLE 17. DEFAULT	38
ARTICLE 18. INDEMNITY, CONSEQUENTIAL DAMAGES AND INSURANCE	39
ARTICLE 19. ASSIGNMENT.....	42
ARTICLE 20. SEVERABILITY	43
ARTICLE 21. COMPARABILITY	43
ARTICLE 22. CONFIDENTIALITY.....	43
ARTICLE 23. ENVIRONMENTAL RELEASES	47

ARTICLE 24. INFORMATION REQUIREMENT	47
ARTICLE 25. INFORMATION ACCESS AND AUDIT RIGHTS	48
ARTICLE 26. SUBCONTRACTORS.....	50
ARTICLE 27. DISPUTES	50
ARTICLE 28. REPRESENTATIONS, WARRANTIES AND COVENANTS	51
ARTICLE 29. MISCELLANEOUS	52
APPENDIX A – ATTACHMENT FACILITIES, NETWORK UPGRADE FACILITIES AND TRANSMISSION FACILITY	58
APPENDIX B – MILESTONES	92
APPENDIX C – INTERCONNECTION DETAILS.....	96
APPENDIX D – SECURITY ARRANGEMENTS DETAILS.....	99
APPENDIX E – COMMERCIAL OPERATION DATE.....	100
APPENDIX F – ADDRESSES FOR DELIVERY OF NOTICES AND BILLINGS	101

[Note: Other appendices may be added to reflect additional technical material and design, construction, operating and maintenance procedures and protocols that are unique to the Transmission Facility or to the Parties to this Agreement or both.]

TRANSMISSION FACILITY INTERCONNECTION AGREEMENT

THIS TRANSMISSION FACILITY INTERCONNECTION AGREEMENT (“Agreement”) is made and entered into this ____ day of _____ 20__, by and between Rochester Gas and Electric Corporation a corporation organized and existing under the laws of the State of New York (“RG&E” or the “Company”) and New York Power Authority), a corporate municipal instrumentality of the State of New York “NYPA” or “Connecting Transmission Owner”). RG&E or Connecting Transmission Owner each may be referred to as a “Party” or collectively referred to as the “Parties.”

RECITALS

WHEREAS, the New York Independent System Operator, Inc. (“NYISO”) operates the New York State Transmission System and Connecting Transmission Owner owns certain facilities included in the New York State Transmission System; and

WHEREAS, RG&E intends to own, lease and/or control and operate the Transmission Facility identified in Appendices A and C to this Agreement; and,

WHEREAS, RG&E and Connecting Transmission Owner have agreed to enter into this Agreement for the purpose of interconnecting the Transmission Facility with the New York State Transmission System.

NOW, THEREFORE, in consideration of and subject to the mutual covenants contained herein, it is agreed:

ARTICLE 1. DEFINITIONS

Whenever used in this Agreement with initial capitalization, the following terms shall have the meanings specified in this Article 1. Terms used in this Agreement with initial capitalization that are not defined in this Article 1 shall have the meanings specified in the NYISO Open-Access Transmission Tariff (“OATT”).

Affected System shall mean an electric system other than the transmission system owned, controlled or operated by Connecting Transmission Owner that may be affected by the proposed interconnection.

Affected System Operator shall mean the entity that operates an Affected System.

Affiliate shall mean, with respect to a person or entity, any individual, corporation, partnership, firm, joint venture, association, joint-stock company, trust or unincorporated organization, directly or indirectly controlling, controlled by, or under common control with, such person or entity. The term “control” shall mean the possession, directly or indirectly, of the power to direct the management or policies of a person or an entity. A voting interest of ten percent or more shall create a rebuttable presumption of control.

Applicable Laws and Regulations shall mean all duly promulgated applicable federal, state and local laws, regulations, rules, ordinances, codes, decrees, judgments, directives, or judicial or administrative orders, permits and other duly authorized actions of any Governmental Authority, including but not limited to Environmental Law.

Applicable Reliability Councils shall mean the NERC, the NPCC and the NYSRC.

Applicable Reliability Standards shall mean the requirements and guidelines of the Applicable Reliability Councils, and the Transmission District to which the Transmission Facility is directly interconnected, as those requirements and guidelines are amended and modified and in effect from time to time; provided that no Party shall waive its right to challenge the applicability or validity of any requirement or guideline as applied to it in the context of this Agreement.

Attachment Facilities shall mean the Connecting Transmission Owner Attachment Facilities and RG&E Attachment Facilities. Collectively, Attachment Facilities include all facilities and equipment between the Transmission Facility and the Point of Interconnection, including any modifications, additions, or upgrades that are necessary to physically and electrically interconnect the Transmission Facility to the New York State Transmission System. Attachment Facilities are sole use facilities and shall not include Stand Alone Network Upgrade Facilities, Distribution Upgrades, Network Upgrade Facilities.

Breach shall mean the failure of a Party to perform or observe any material term or condition of this Agreement.

Breaching Party shall mean a Party that is in Breach of this Agreement.

Business Day shall mean Monday through Friday, excluding federal holidays.

Calendar Day shall mean any day including Saturday, Sunday or a federal holiday.

Commercial Operation shall mean the status of the Transmission Facility that has commenced transmitting electricity, excluding electricity transmitted during Trial Operation.

Commercial Operation Date shall mean the date on which the Transmission Facility commences Commercial Operation as agreed to by the Parties pursuant to Appendix E to this Agreement.

Confidential Information shall mean any information that is defined as confidential by Article 22 of this Agreement.

Connecting Transmission Owner shall have the meaning set forth in the introductory paragraph of this Agreement, and such entity owns, leases or otherwise possesses an interest in the portion of the New York State Transmission System at the Point of Interconnection.

Connecting Transmission Owner Attachment Facilities shall mean all facilities and equipment owned, controlled or operated by Connecting Transmission Owner from the Points of Change of Ownership to the Points of Interconnection as identified in Appendix A to this Agreement, including any modifications, additions or upgrades to such facilities and equipment

from time to time necessary to physically and electrically interconnect the Transmission Facility to the New York State Transmission System.

Control Area shall mean an electric power system or combination of electric power systems to which a common automatic generation control scheme is applied in order to: (1) match, at all times, the power output of the generators within the electric power system(s) and capacity and energy purchased from entities outside the electric power system(s), with the Load within the electric power system(s); (2) maintain scheduled interchange with other Control Areas, within the limits of Good Utility Practice; (3) maintain the frequency of the electric power system(s) within reasonable limits in accordance with Good Utility Practice; and (4) provide sufficient generating capacity to maintain Operating Reserves in accordance with Good Utility Practice. A Control Area must be certified by the NPCC.

Default shall mean the failure of a Party in Breach of this Agreement to cure such Breach in accordance with Article 17 of this Agreement.

Dispute Resolution shall mean the procedure described in Article 27 of this Agreement for resolution of a dispute between the Parties.

Effective Date shall mean the date on which this Agreement becomes effective upon execution by the Parties, subject to acceptance by the Commission, or if filed unexecuted, upon the date specified by the Commission.

Emergency State shall mean the condition or state that the New York State Transmission System is in when an abnormal condition occurs that requires automatic or immediate manual action to prevent or limit loss of the New York State Transmission System or generators that could adversely affect the reliability of the New York State Transmission System.

Engineering & Procurement (E&P) Agreement shall mean an agreement that authorizes Connecting Transmission Owner to begin engineering and procurement of long lead time items necessary for the establishment of the interconnection.

Environmental Law shall mean Applicable Laws or Regulations relating to pollution or protection of the environment or natural resources.

Federal Power Act or FPA shall mean the Federal Power Act, as amended, 16 U.S.C. §§ 791a et seq.

FERC or Commission shall mean the Federal Energy Regulatory Commission or its successor.

Force Majeure shall mean any act of God, labor disturbance, act of the public enemy, war, insurrection, riot, fire, storm or flood, explosion, breakage or accident to machinery or equipment, any order, regulation or restriction imposed by governmental, military or lawfully established civilian authorities, or any other cause beyond a Party's control. A Force Majeure event does not include acts of negligence or intentional wrongdoing by the Party claiming Force Majeure.

Good Utility Practice shall mean any of the practices, methods and acts engaged in or approved by a significant portion of the electric industry during the relevant time period, or any of the practices, methods and acts which, in the exercise of reasonable judgment in light of the facts known at the time the decision was made, could have been expected to accomplish the desired result at a reasonable cost consistent with good business practices, reliability, safety and expedition. Good Utility Practice is not intended to be limited to the optimum practice, method, or act to the exclusion of all others, but rather to delineate acceptable practices, methods, or acts generally accepted in the region.

Governmental Authority shall mean any federal, state, local or other governmental regulatory or administrative agency, court, commission, department, board, or other governmental subdivision, legislature, rulemaking board, tribunal, or other governmental authority having jurisdiction over any of the Parties, their respective facilities, or the respective services they provide, and exercising or entitled to exercise any administrative, executive, police, or taxing authority or power; provided, however, that such term does not include RG&E, Connecting Transmission Owner, NYISO or any Affiliate thereof.

Hazardous Substances shall mean any chemicals, materials or substances defined as or included in the definition of “hazardous substances,” “hazardous wastes,” “hazardous materials,” “hazardous constituents,” “restricted hazardous materials,” “extremely hazardous substances,” “toxic substances,” “radioactive substances,” “contaminants,” “pollutants,” “toxic pollutants” or words of similar meaning and regulatory effect under any applicable Environmental Law, or any other chemical, material or substance, exposure to which is prohibited, limited or regulated by any applicable Environmental Law.

Initial Energization Date shall mean the date upon which the Transmission Facility is initially interconnected and energized with the New York State Transmission System and upon which Trial Operation begins.

IRS shall mean the Internal Revenue Service.

Loss shall mean any and all losses relating to injury to or death of any person or damage to property, demand, suits, recoveries, costs and expenses, court costs, attorney fees, and all other obligations by or to third parties, arising out of or resulting from the Indemnified Party’s performance or non-performance of its obligations under this Agreement on behalf of the Indemnifying Party, except in cases of gross negligence or intentional wrongdoing by the Indemnified Party.

Metering Equipment shall mean all metering equipment installed or to be installed pursuant to this Agreement at the Point of Interconnection, including but not limited to instrument transformers, MWh-meters, data acquisition equipment, transducers, remote terminal unit, communications equipment, phone lines, and fiber optics.

NERC shall mean the North American Electric Reliability Corporation or its successor organization.

New York State Transmission System shall mean the entire New York State electric transmission system, which includes: (i) the transmission facilities under NYISO Operational Control; (ii) the transmission facilities requiring NYISO Notification; and (iii) all remaining transmission facilities within the New York Control Area.

Network Upgrade Facilities shall mean the least costly configuration of commercially available components of electrical equipment that can be used, consistent with good utility practice and Applicable Reliability Requirements, to make the modifications or additions to the New York State Transmission System that are required for the proposed Transmission Project to connect reliably to the system in a manner that meets the NYISO Transmission Interconnection Standard. (Transmission Interconnection Procedures in Attachment P)

Notice of Dispute shall mean a written notice of a dispute or claim that arises out of or in connection with this Agreement or its performance.

NPCC shall mean the Northeast Power Coordinating Council or its successor organization.

NYSRC shall mean the New York State Reliability Council or its successor organization.

Party or Parties shall mean Connecting Transmission Owner, or RG&E, or any combination of the above.

Point of Change in Ownership shall mean the point, as set forth in Appendix A to this Agreement, where the RG&E Attachment Facilities connect to the Connecting Transmission Owner Attachment Facilities.

Point of Interconnection shall mean the point, as set forth in Appendix A to this Agreement, where the Attachment Facilities connect to the New York State Transmission System.

Reasonable Efforts shall mean, with respect to an action required to be attempted or taken by a Party under this Agreement, efforts that are timely and consistent with Good Utility Practice and are otherwise substantially equivalent to those a Party would use to protect its own interests.

Services Tariff shall mean the NYISO Market Administration and Control Area Tariff, as filed with the Commission, and as amended or supplemented from time to time, or any successor tariff thereto.

Stand Alone Network Upgrade Facilities shall mean Network Upgrade Facilities that RG&E may construct without affecting day-to-day operations of the New York State Transmission System during their construction. Connecting Transmission Owner and RG&E must agree as to what constitutes Stand Alone Network Upgrade Facilities and identify them in Appendix A to this Agreement.

System Protection Facilities shall mean the equipment, including necessary protection signal communications equipment, required to (1) protect the New York State Transmission System from faults or other electrical disturbances occurring at the Transmission Facility and (2) protect the Transmission Facility from faults or other electrical system disturbances occurring on the

New York State Transmission System or on other delivery systems or other generating systems to which the New York State Transmission System is directly connected.

Tariff shall mean the NYISO Open Access Transmission Tariff (“OATT”), as filed with the Commission, and as amended or supplemented from time to time, or any successor tariff.

RG&E Attachment Facilities or RAF shall mean all facilities and equipment owned, controlled or operated by RG&E, as identified in Appendix A of this Agreement, that are located between the Transmission Facility and the Points of Change of Ownership, including any modification, addition, or upgrades to such facilities and equipment necessary to physically and electrically interconnect the Transmission Facility to the New York State Transmission System.

Transmission Facility shall have the meaning set forth in Appendix A hereto.

Trial Operation shall mean the period during which RG&E is engaged in on-site test operations and commissioning of the Transmission Facility prior to Commercial Operation.

ARTICLE 2. EFFECTIVE DATE, TERM AND TERMINATION

2.1 Effective Date.

This Agreement shall become effective upon execution by the Parties, subject to acceptance by FERC, or if filed unexecuted, upon the date specified by FERC. The Connecting Transmission Owner and RG&E shall promptly file this Agreement with FERC upon execution in accordance with Article 3.1.

2.2 Term of Agreement.

Subject to the provisions of Article 2.3, this Agreement shall remain in effect for a period of twenty (20) years from the Effective Date and shall be automatically renewed for each successive five-year period thereafter.

2.3 Termination.

2.3.1 Written Notice.

Prior to the Commercial Operation Date, this Agreement may be terminated by RG&E after giving the Connecting Transmission Owner ninety (90) Calendar Days advance written notice or by Connecting Transmission Owner to the extent permitted by FERC. After the Commercial Operation Date, this Agreement may be terminated by RG&E or Connecting Transmission Owner notifying FERC after the Transmission Facility permanently ceases Commercial Operation.

2.3.2 Default.

Either Party may terminate this Agreement in accordance with Article 17.

2.3.3 Compliance.

Notwithstanding Articles 2.3.1 and 2.3.2, no termination of this Agreement shall become effective until the Parties have complied with all Applicable Laws and Regulations applicable to such termination, including the filing with FERC of a notice of termination of this Agreement, which notice has been accepted for filing by FERC.

2.4 Termination Costs.

If a Party elects to terminate this Agreement pursuant to Article 2.3.1 above, the terminating Party shall pay all costs incurred (including any cancellation costs relating to orders or contracts for Attachment Facilities and equipment) or charges assessed by the other Parties, as of the date of the other Parties' receipt of such notice of termination, that are the responsibility of the terminating Party under this Agreement. In the event of termination by a Party, all Parties shall use commercially Reasonable Efforts to mitigate the costs, damages and charges arising as a consequence of termination. Upon termination of this Agreement, unless otherwise ordered or approved by FERC:

2.4.1 With respect to any portion of the Connecting Transmission Owner Attachment Facilities that have not yet been constructed or installed, Connecting Transmission Owner shall to the extent possible and with RG&E's authorization cancel any pending orders of, or return, any materials or equipment for, or contracts for construction of, such facilities; provided that in the event RG&E elects not to authorize such cancellation, RG&E shall assume all payment obligations with respect to such materials, equipment, and contracts, and Connecting Transmission Owner shall deliver such material and equipment, and, if necessary, assign such contracts, to RG&E as soon as practicable, at RG&E's expense. To the extent that RG&E has already paid Connecting Transmission Owner for any or all such costs of materials or equipment not taken by RG&E, Connecting Transmission Owner shall promptly refund such amounts to RG&E, less any costs, including penalties incurred by Connecting Transmission Owner to cancel any pending orders of or to return such materials, equipment, or contracts.

If RG&E terminates this Agreement, it shall be responsible for all costs incurred in association with RG&E's interconnection, including any cancellation costs relating to orders or contracts for Attachment Facilities and equipment, and other expenses including any Network Upgrade Facilities for which Connecting Transmission Owner has incurred expenses and has not been reimbursed by RG&E.

2.4.2 Connecting Transmission Owner may, at its option, retain any portion of such materials, equipment, or facilities that RG&E chooses not to accept delivery of, in which case Connecting Transmission Owner shall be responsible for all costs associated with procuring such materials, equipment, or facilities.

2.4.3 With respect to any portion of the Attachment Facilities, and any other facilities already installed or constructed pursuant to the terms of this Agreement, RG&E shall be responsible for all costs associated with the removal, relocation or other disposition or retirement of such materials, equipment, or facilities, where applicable.

2.5 Disconnection.

Upon termination of this Agreement, RG&E and Connecting Transmission Owner will take all appropriate steps to disconnect the Transmission Facility from the New York State Transmission System. All costs required to effectuate such disconnection shall be borne by the terminating Party, unless such termination resulted from the non-terminating Party's Default of this Agreement or such non-terminating Party otherwise is responsible for these costs under this Agreement.

2.6 Survival.

This Agreement shall continue in effect after termination to the extent necessary to provide for final billings and payments and for costs incurred hereunder; including billings and payments pursuant to this Agreement; to permit the determination and enforcement of liability and indemnification obligations arising from acts or events that occurred while this Agreement was in effect; and to permit RG&E and Connecting Transmission Owner each to have access to the lands of the other pursuant to this Agreement or other applicable agreements, to disconnect, remove or salvage its own facilities and equipment.

ARTICLE 3. REGULATORY FILINGS

3.1 Filing.

Connecting Transmission Owner and RG&E shall file this Agreement (and any amendment hereto) with the appropriate Governmental Authority, if required. Any information related to studies for interconnection asserted by RG&E to contain Confidential Information shall be treated in accordance with Article 22 of this Agreement and Attachment F to the NYISO OATT. RG&E and Connecting Transmission Owner shall reasonably cooperate with one another with respect to such filing and shall provide any information reasonably requested by the other Party needed to comply with Applicable Laws and Regulations.

ARTICLE 4. SCOPE OF INTERCONNECTION SERVICE

4.1 Provision of Service.

Connecting Transmission Owner shall permit RG&E to interconnect its Transmission Facility to the New York Transmission System in accordance with the terms and conditions of this Agreement.

4.2 No Transmission Delivery Service.

The execution of this Agreement does not constitute a request for, nor agreement to provide, any Transmission Service under the NYISO OATT, and does not convey any right to deliver electricity to any specific customer or Point of Delivery. If RG&E wishes to obtain Transmission Service on the New York State Transmission System, then RG&E must request such Transmission Service in accordance with the provisions of the NYISO OATT.

4.3 No Other Services.

This Agreement does not in any way alter the Transmission Facility's eligibility for Unforced Capacity Deliverability Rights to the extent such Unforced Capacity Deliverability Rights are requested by RG&E after execution of this Agreement.

ARTICLE 5. ATTACHMENT FACILITIES ENGINEERING, PROCUREMENT, AND CONSTRUCTION

5.1 Construction Dates/Description of Facilities.

RG&E and Connecting Transmission Owner shall mutually select the Initial Energization Date and the Commercial Operation Date for completion of the Connecting Transmission Owner Attachment Facilities, Network Upgrade Facilities and Stand Alone Network Upgrade Facilities, as set forth in Appendix A hereto, and such dates shall be set forth in Appendix B hereto.

5.1.1 Construction of Attachment Facilities and Network Upgrade Facilities.

The Connecting Transmission Owner shall design, procure, and construct the Connecting Transmission Owner Attachment Facilities and, as permitted by Applicable Laws and Regulations, the Network Upgrade Facilities, using Reasonable Efforts to complete the Connecting Transmission Owner Attachment Facilities and Network Upgrade Facilities by the dates set forth in Appendix B hereto. The Connecting Transmission Owner shall not be required to undertake any action which is inconsistent with its standard safety practices, its material and equipment specifications, its design criteria and construction procedures, its labor agreements, and Applicable Laws and Regulations. In the event the Connecting Transmission Owner reasonably expects that it will not be able to complete the Connecting Transmission Owner Attachment Facilities and Network Upgrade Facilities by the specified dates, Connecting Transmission Owner shall promptly provide written notice to RG&E, and shall undertake Reasonable Efforts to meet the earliest dates thereafter.

RG&E shall design, procure, and construct the RG&E Attachment Facilities using Reasonable Efforts to complete the RG&E Attachment Facilities by the dates set forth in Appendix B hereto. RG&E shall not be required to undertake any action which is inconsistent with its standard safety practices, its material and equipment specifications, its design criteria and construction procedures, its labor agreements, and Applicable Laws and Regulations. In the event RG&E reasonably expects that it will not be able to complete the RG&E Attachment Facilities by the specified dates, RG&E shall promptly provide written notice to Connecting Transmission Owner, and shall undertake Reasonable Efforts to meet the earliest dates thereafter.

5.1.2 Option for Construction of CTO Attachment Facilities and Stand Alone Network Upgrade Facilities.

Pursuant to the mutual agreement of the Parties, RG&E may assume responsibility for the design, procurement, construction and installation of Connecting Transmission Owner Attachment Facilities and Stand Alone Network Upgrade Facilities on the dates specified in

Article 5.1, and set forth in Appendix B. Connecting Transmission Owner and RG&E must agree as to what constitutes Stand Alone Network Upgrade Facilities and identify such Stand Alone Network Upgrade Facilities in Appendix A hereto. Except for Stand Alone Network Upgrade Facilities, RG&E shall have no right to construct Network Upgrade Facilities.

5.2 General Conditions Applicable to RG&E Design, Procurement, and Construction.

If RG&E assumes responsibility for the design, procurement and construction of the Connecting Transmission Owner Attachment Facilities or Stand Alone Network Upgrade Facilities,

(1) RG&E shall engineer (consistent with applicable law), procure equipment, and construct the Connecting Transmission Owner Attachment Facilities or Stand Alone Network Upgrade Facilities (or portions thereof) using Good Utility Practice and using standards and specifications provided in advance by Connecting Transmission Owner;

(2) RG&E's engineering, procurement and construction of the Connecting Transmission Owner Attachment Facilities or Stand Alone Network Upgrade Facilities shall comply with all requirements of law to which Connecting Transmission Owner would be subject in the engineering procurement or construction of the Connecting Transmission Owner Attachment Facilities and Stand Alone Network Upgrade Facilities, and shall comply with the Connecting Transmission Owner's interconnection criteria;

(3) Connecting Transmission Owner shall review and approve the engineering design, equipment acceptance tests and the construction of the Connecting Transmission Owner Attachment Facilities or Stand Alone Network Upgrade Facilities;

(4) Prior to commencement of construction, RG&E shall provide to Connecting Transmission Owner a schedule for construction of the Connecting Transmission Owner Attachment Facilities or Stand Alone Network Upgrade Facilities, and shall promptly respond to requests for information from Connecting Transmission Owner;

(5) At any time during construction, Connecting Transmission Owner shall have the right to gain unrestricted access to the Connecting Transmission Owner Attachment Facilities or Stand Alone Network Upgrade Facilities and to conduct inspections of the same;

(6) At any time during construction, should any phase of the engineering, equipment procurement or construction of the Connecting Transmission Owner Attachment Facilities or Stand Alone Network Upgrade Facilities not meet the standards and specifications provided by Connecting Transmission Owner, RG&E shall be obligated to remedy deficiencies in that portion of the Connecting Transmission Owner Attachment Facilities or Stand Alone Network Upgrade Facilities;

(7) RG&E shall indemnify Connecting Transmission Owner for claims arising from RG&E's construction of Connecting Transmission Owner Attachment Facilities or Stand Alone Network Upgrade Facilities under procedures applicable to Article 18.1 Indemnity;

(8) RG&E shall transfer ownership of Connecting Transmission Owner Attachment Facilities to Connecting Transmission Owner;

(9) Connecting Transmission Owner shall approve and accept for operation and maintenance the Connecting Transmission Owner Attachment Facilities to the extent engineered, procured, and constructed in accordance with this Article 5.2; and

(10) RG&E shall deliver to Connecting Transmission Owner “as built” drawings, information, and any other documents that are reasonably required by Connecting Transmission Owner to assure that the Connecting Transmission Owner Attachment Facilities are built to the standards and specifications required by Connecting Transmission Owner.

(11) RG&E agrees to comply with all applicable provisions of Section 220 of the New York Labor Law (“Section 220”), as it may be amended from time to time. Pursuant to the requirements of Section 220, RG&E as the Developer agrees that, for the work performed on existing Connecting Transmission Owner’s facilities (i.e. “public work”):

(a) Each laborer, workman or mechanic shall be paid no less than the prevailing wage as defined in Section 220,

(b) The filing of payrolls shall be made in a manner consistent with subdivision three-a (3(a)) of Section 220; this is a condition precedent to payment of any sums due and owing to any person for work done upon the project, and

(c) No laborer, worker, or mechanic shall be permitted or required to work more than eight hours in any one calendar day or more than five days in any one week except in cases of extraordinary emergency including fire, flood, or danger to life or property.¹

5.3 [Reserved]

5.4 [Reserved]

5.5 Equipment Procurement.

If responsibility for construction of the Connecting Transmission Owner Attachment Facilities or Network Upgrade Facilities is to be borne by Connecting Transmission Owner, then Connecting Transmission Owner shall commence the design of the Connecting Transmission Owner Attachment Facilities or Network Upgrade Facilities, and procure necessary equipment as soon as practicable after all of the following conditions are satisfied, unless RG&E and Connecting Transmission Owner otherwise agree in writing:

¹ RG&E reserves its rights set forth in Section 220 to obtain dispensation permitting laborers, workers and mechanics to work additional hours or days per week.

5.5.1 The completion of the interconnection study pursuant to Sections 3.7 or 4.5 of the NYISO OATT, as applicable.

5.5.2 Connecting Transmission Owner has received written authorization to proceed with design and procurement from RG&E by the date specified in Appendix B hereto.

5.5.3 RG&E has provided security to the Connecting Transmission Owner in accordance with Article 11.5 by the dates specified in Appendix B hereto.

5.6 [Reserved]

5.7 Work Progress.

RG&E and Connecting Transmission Owner will keep each other advised periodically as to the progress of their respective design, procurement and construction efforts. Either Party may, at any time, request a progress report from the other Party. If, at any time, RG&E determines that the completion of the Connecting Transmission Owner Attachment Facilities will not be required until after the specified Commercial Operation Date, RG&E will provide written notice to Connecting Transmission Owner of such later date upon which the completion of the Connecting Transmission Owner Attachment Facilities will be required.

5.8 Information Exchange.

As soon as reasonably practicable after the Effective Date, RG&E and Connecting Transmission Owner shall exchange information regarding the design and compatibility of their respective Attachment Facilities and compatibility of the Attachment Facilities with the New York State Transmission System, and shall work diligently and in good faith to make any necessary design changes.

5.9 Limited Operation.

If any of the Connecting Transmission Owner Attachment Facilities or Network Upgrade Facilities are not reasonably expected to be completed prior to the Commercial Operation Date of the Transmission Facility, Connecting Transmission Owner shall request that RG&E perform operating studies on a timely basis to determine the extent to which the Transmission Facility and RG&E Attachment Facilities may operate prior to the completion of the Connecting Transmission Owner Attachment Facilities or Network Upgrade Facilities consistent with Applicable Laws and Regulations, Applicable Reliability Standards, Good Utility Practice, and this Agreement. The Connecting Transmission Owner shall permit RG&E to operate the Transmission Facility and RG&E Attachment Facilities in accordance with the results of such studies.

5.10 RG&E Attachment Facilities (“RAF”).

RG&E shall, at its expense, design, procure, construct, own and install the RAF as set forth in Appendix A hereto.

5.10.1 RAF Specifications.

RG&E shall submit initial specifications for the RAF, including System Protection Facilities, to Connecting Transmission Owner at least one hundred eighty (180) Calendar Days prior to the Initial Energization Date; and final specifications for review and comment at least ninety (90) Calendar Days prior to the Initial Energization Date unless RG&E and Connecting Transmission Owner agree on another mutually acceptable deadline. Connecting Transmission Owner shall review such specifications to ensure that the RAF are compatible with the technical specifications, operational control, and safety requirements of Connecting Transmission Owner and comment on such specifications within thirty (30) Calendar Days of RG&E's submission unless RG&E and Connecting Transmission Owner agree on another mutually acceptable deadline. All specifications provided hereunder shall be deemed to be Confidential Information.

5.10.2 No Warranty.

The review of RG&E's final specifications by Connecting Transmission Owner shall not be construed as confirming, endorsing, or providing a warranty as to the design, fitness, safety, durability or reliability of the Transmission Facility, or the RAF. RG&E shall make such changes to the RAF as may reasonably be required by Connecting Transmission Owner, or in accordance with Good Utility Practice, to ensure that the RAF are compatible with the technical specifications, operational control, and safety requirements of Connecting Transmission Owner.

5.10.3 RAF Construction.

The RAF shall be designed and constructed in accordance with Good Utility Practice. Within one hundred twenty (120) Calendar Days after the Commercial Operation Date, unless RG&E and Connecting Transmission Owner agree on another mutually acceptable deadline. RG&E shall deliver to Connecting Transmission Owner "as-built" drawings, information and documents for the RAF, such as: a one-line diagram, a site plan showing the Transmission Facility and the RAF, plan and elevation drawings showing the layout of the RAF, a relay functional diagram, relaying AC and DC schematic wiring diagrams and relay settings for all facilities associated with RG&E's step-up transformers, the facilities connecting the Transmission Facility to the step-up transformers and the RAF, and the impedances (determined by factory tests) for the associated step-up transformers and the Transmission Facility. RG&E shall provide to Connecting Transmission Owner, and coordinate with Connecting Transmission Owner, with respect to proposed specifications for Transmission Facility control and protection settings, transformer tap settings, and communications, if applicable. RG&E shall confer with the NYISO regarding the transfer of operational control of the Transmission Facility and RG&E Attachment Facilities to the NYISO upon completion of such facilities.

5.11 Connecting Transmission Owner Attachment Facilities Construction.

The Connecting Transmission Owner Attachment Facilities shall be designed and constructed in accordance with Good Utility Practice. Upon request, within one hundred twenty (120) Calendar Days after the Commercial Operation Date, unless Connecting Transmission Owner and RG&E agree on another mutually acceptable deadline, RG&E shall deliver to Connecting Transmission Owner the following "as-built" drawings, information and documents

for the Connecting Transmission Owner Attachment Facilities. Connecting Transmission Owner shall confer with the NYISO regarding the transfer of operational control of the Connecting Transmission Owner Attachment Facilities and Network Upgrade Facilities to the NYISO upon completion of such facilities. RG&E shall confer with the NYISO regarding the transfer of operational control of the RG&E Stand Alone Network Upgrade Facilities to the NYISO upon completion of such facilities.

5.12 Access Rights.

5.12.1 RG&E's Access. Upon reasonable notice and supervision by the Connecting Transmission Owner, the Connecting Transmission Owner hereby authorizes the authorized agents, representatives, contractors, and employees of RG&E to enter the facilities of Connecting Transmission Owner at all reasonable times and subject to any required or necessary regulatory approvals. Connecting Transmission Owner shall furnish to RG&E at no cost any rights of use, licenses, rights of way and easements with respect to lands owned or controlled by Connecting Transmission Owner to the extent reasonably required for RG&E to obtain ingress and egress at the Point of Interconnection to construct, operate, maintain, repair, test (or witness testing), inspect, replace or remove facilities and equipment to: (i) interconnect the Transmission Facility with the New York State Transmission System; (ii) operate and maintain the Transmission Facility, the Attachment Facilities and the New York State Transmission System; and (iii) disconnect or remove the RG&E's facilities and equipment upon termination of this Agreement. Connecting Transmission Owner's obligation hereunder shall be to provide RG&E (and its agents, representatives, contractors and employees) adequate and continuous access to all sites where access is authorized under this Article 5.12. RG&E and its authorized agents, representatives, contractors and employees, shall comply with Connecting Transmission Owner's safety and security procedures, switching and tagging rules, and escort and other applicable access requirements, including NERC CIP requirements, in connection with exercising the rights of access granted hereby. Connecting Transmission Owner shall give prompt notice to RG&E of any changes to Connecting Transmission Owner's safety and security procedures, switching and tagging rules, and escort and other applicable access requirements.

RG&E must, prior to any access to Connecting Transmission Owner's facilities, and during the term of this Agreement, provide and maintain insurance in the kinds and amounts referred in Article 18.

Connecting Transmission Owner reserves the right to deny access to RG&E's authorized agents, representatives, contractors and employees, in or around the Connecting Transmission Owner's facilities if, in Connecting Transmission Owner's sole judgment, such authorized agents, representatives, contractors and employees are:

(a) bringing, using, distributing, selling or possessing illegal drugs or alcoholic beverages at the Connecting Transmission Owner's facilities;

(b) unfit for duty at any time during their assignment and under the influence of alcohol or other drugs; or

- (c) otherwise engaged in any improper or unlawful activity.

Furthermore, Connecting Transmission Owner shall have the authority to suspend RG&E's access, work or operations (including access, work or operations of any of RG&E's agents, representatives, contractors and employees) in and around such Connecting Transmission Owner facilities if, in its sole judgment, at any time hazardous conditions arise or any unsafe practices are being followed by RG&E's agents, representatives, contractors and employees and RG&E fails to take immediate measures to correct such conditions or practices. In exercising its access rights under this Article 5.12, RG&E shall not unreasonably disrupt or interfere with normal operation of Connecting Transmission Owner's business and shall adhere to the safety rules and procedures established in advance, as may be changed from time to time, by Connecting Transmission Owner and provided to RG&E. In accordance with Article 18, RG&E shall indemnify Connecting Transmission Owner against all claims of injury or damage from third parties resulting from the exercise of the access rights provided for herein.

5.12.2 Connecting Transmission Owner's Access. Upon reasonable notice and supervision by RG&E, RG&E hereby authorizes the authorized agents, representatives, contractors, and employees of Connecting Transmission Owner to enter the facilities of RG&E at all reasonable times and subject to any required or necessary regulatory approvals, shall furnish to Connecting Transmission Owner at no cost any rights of use, licenses, rights of way and easements with respect to lands owned or controlled by RG&E to the extent reasonably required for Connecting Transmission Owner to obtain ingress and egress at the Point of Interconnection to construct, operate, maintain, repair, test (or witness testing), inspect, replace or remove facilities and equipment to: (i) interconnect the Transmission Facility with the New York State Transmission System; (ii) operate and maintain the Transmission Facility, the Attachment Facilities and the New York State Transmission System; and (iii) disconnect or remove the Connecting Transmission Owner's facilities and equipment upon termination of this Agreement. RG&E's obligation hereunder shall be to provide Connecting Transmission Owner (and its agents, representatives, contractors and employees) adequate and continuous access to all sites where access is authorized under this Section 5.12. Connecting Transmission Owner and its authorized agents, representatives, contractors and employees, shall comply with RG&E's safety and security procedures, switching and tagging rules, and escort and other applicable access requirements in connection with exercising the rights of access granted hereby. RG&E shall give prompt notice to Connecting Transmission Owner of any changes to RG&E's safety and security procedures, switching and tagging rules, and escort and other applicable access requirements.

Connecting Transmission Owner must, prior to any access to RG&E's facilities, and during the term of this Agreement, provide and maintain insurance in the kinds and amounts referred in Article 18 hereof.

RG&E reserves the right to deny access to Connecting Transmission Owner's authorized agents, representatives, contractors and employees, in or around the RG&E's facilities if, in RG&E's sole judgment, such authorized agents, representatives, contractors and employees are:

- (a) bringing, using, distributing, selling or possessing illegal drugs or alcoholic beverages at the RG&E's facilities;

(b) unfit for duty at any time during their assignment and under the influence of alcohol or other drugs; or

(c) otherwise engaged in any improper or unlawful activity.

Furthermore, RG&E shall have the authority to suspend Connecting Transmission Owner's access, work or operations (including access, work or operations of any of Connecting Transmission Owner's agents, representatives, contractors and employees) in and around such RG&E facilities if, in its sole judgment, at any time hazardous conditions arise or any unsafe practices are being followed by Connecting Transmission Owner's agents, representatives, contractors and employees and Connecting Transmission Owner fails to take immediate measures to correct such conditions or practices. In exercising its access rights under this Article 5.12, Connecting Transmission Owner shall not unreasonably disrupt or interfere with normal operation of RG&E's business and shall adhere to the safety rules and procedures established in advance, as may be changed from time to time, by RG&E and provided to Connecting Transmission Owner. In accordance with Article 18, Connecting Transmission Owner shall indemnify RG&E against all claims of injury or damage from third parties resulting from the exercise of the access rights provided for herein.

5.13 Lands of Other Property Owners.

If any part of the Connecting Transmission Owner Attachment Facilities and/or Network Upgrade Facilities is to be installed on property owned by persons other than RG&E or Connecting Transmission Owner, Connecting Transmission Owner shall at RG&E's expense use efforts, similar in nature and extent to those that it typically undertakes for its own or affiliated transmission, including use of its eminent domain authority, and to the extent consistent with state law, to procure from such persons any rights of use, licenses, rights of way and easements that are necessary to construct, operate, maintain, test, inspect, replace or remove the Connecting Transmission Owner Attachment Facilities and/or Network Upgrade Facilities upon such property. Pursuant to Section 1007 of the New York Public Authorities Law, NYPA has the right to take real property through eminent domain when NYPA trustees, in their discretion, deem an eminent domain taking necessary or convenient to acquire real property for the purpose described in such statute. RG&E acknowledges that for projects involving NYPA as the Connecting Transmission Owner, NYPA can only use efforts to acquire property by eminent domain if and to the extent consistent with the New York Public Authorities Law (or any amendments thereto).

If any part of the RG&E Attachment Facilities and/or Stand Alone Network Upgrade Facilities are to be installed on property owned or controlled by persons other than RG&E or Connecting Transmission Owner, RG&E shall use efforts, similar in nature and extent to those that it typically undertakes for its own transmission or affiliated transmission, and, to the extent consistent with state law, to procure from such persons any rights of use, licenses, rights-of-way, and easements that are necessary to construct, operate, maintain, test, inspect, replace, or remove the RG&E Attachment Facilities and/or Stand Alone Network Upgrade Facilities upon such property.

5.14 Permits.

Connecting Transmission Owner and RG&E shall cooperate with each other in good faith in obtaining all permits, licenses and authorizations that are necessary to accomplish the interconnection in compliance with Applicable Laws and Regulations. With respect to this paragraph, Connecting Transmission Owner shall provide permitting assistance to RG&E comparable to that provided to Connecting Transmission Owner's own, or an Affiliate's, generation or transmission facilities, if any, provided that RG&E shall pay Connecting Transmission Owner's costs in providing such permitting assistance.

5.15 [Reserved].

5.16 Suspension.

RG&E reserves the right, upon written notice to Connecting Transmission Owner, to suspend at any time all work by Connecting Transmission Owner associated with the construction and installation of Connecting Transmission Owner Attachment Facilities required for RG&E under this Agreement with the condition that the New York State Transmission System shall be left in a safe and reliable condition in accordance with Good Utility Practice and the safety and reliability criteria of Connecting Transmission Owner. In such event, RG&E shall be responsible for all reasonable and necessary costs and/or obligations in accordance with applicable NYISO procedures, including those which Connecting Transmission Owner (i) has incurred pursuant to this Agreement prior to the suspension and (ii) incurs in suspending such work, including any costs incurred to perform such work as may be necessary to ensure the safety of persons and property and the integrity of the New York State Transmission System during such suspension and, if applicable, any costs incurred in connection with the cancellation or suspension of material, equipment and labor contracts which Connecting Transmission Owner cannot reasonably avoid; provided, however, that prior to canceling or suspending any such material, equipment or labor contract, Connecting Transmission Owner shall obtain RG&E's authorization to do so.

Connecting Transmission Owner shall invoice RG&E for such costs pursuant to Article 12 and shall use due diligence to minimize its costs. In the event RG&E suspends work by Connecting Transmission Owner required under this Agreement pursuant to this Article 5.16, and has not requested Connecting Transmission Owner to recommence the work required under this Agreement on or before the expiration of three (3) years following commencement of such suspension, this Agreement shall be deemed terminated. The three-year period shall begin on the date the suspension is requested, or the date of the written notice to Connecting Transmission Owner, if no effective date is specified.

5.17 Taxes.

5.17.1 RG&E Payments Not Taxable.

RG&E and Connecting Transmission Owner intend that all payments or property transfers made by RG&E to Connecting Transmission Owner for the installation of the Connecting Transmission Owner Attachment Facilities and the Network Upgrade Facilities, shall

be non-taxable, either as contributions to capital, or as an advance, in accordance with the Internal Revenue Code and any applicable state income tax laws and shall not be taxable as contributions in aid of construction or otherwise under the Internal Revenue Code and any applicable state income tax laws.

5.17.2 Representations and Covenants.

In accordance with IRS Notice 2001-82 and IRS Notice 88-129, as applicable to this Transmission Facility, RG&E represents and covenants that (i) ownership of the electricity transmitted at the Transmission Facility will pass to another party prior to the transmission of the electricity on the New York State Transmission System, (ii) for income tax purposes, the amount of any payments and the cost of any property transferred to the Connecting Transmission Owner for the Connecting Transmission Owner Attachment Facilities will be capitalized by RG&E as an intangible asset and recovered using the straight-line method over a useful life of twenty (20) years, and (iii) any portion of the Connecting Transmission Owner Attachment Facilities that is a “dual-use intertie,” within the meaning of IRS Notice 88-129, is reasonably expected to carry only a de minimis amount of electricity in the direction of the Transmission Facility. For this purpose, “de minimis amount” means no more than 5 percent of the total power flows in both directions, calculated in accordance with the “5 percent test” set forth in IRS Notice 88-129. This is not intended to be an exclusive list of the relevant conditions that must be met to conform to IRS requirements for non-taxable treatment.

At Connecting Transmission Owner’s request, RG&E shall provide Connecting Transmission Owner with a report from an independent engineer confirming its representation in clause (iii), above. Connecting Transmission Owner represents and covenants that the cost of the Connecting Transmission Owner Attachment Facilities and Network Upgrade Facilities paid for by RG&E will have no net effect on the base upon which rates are determined.

5.17.3 Indemnification for the Cost Consequences of Current Tax Liability Imposed Upon Connecting Transmission Owner.

Notwithstanding Article 5.17.1, RG&E shall protect, indemnify and hold harmless Connecting Transmission Owner from the cost consequences of any current tax liability imposed against Connecting Transmission Owner as the result of payments or property transfers made by RG&E to Connecting Transmission Owner under this Agreement, as well as any interest and penalties, other than interest and penalties attributable to any delay caused by Connecting Transmission Owner.

Connecting Transmission Owner shall not include a gross-up for the cost consequences of any current tax liability in the amounts it charges RG&E under this Agreement unless (i) Connecting Transmission Owner has determined, in good faith, that the payments or property transfers made by RG&E to Connecting Transmission Owner should be reported as income subject to taxation or (ii) any Governmental Authority directs Connecting Transmission Owner to report payments or property as income subject to taxation; provided, however, that Connecting Transmission Owner may require RG&E to provide security, in a form reasonably acceptable to Connecting Transmission Owner (such as a parental guarantee or a letter of credit), in an amount equal to the cost consequences of any current tax liability under this Article 5.17. RG&E shall

reimburse Connecting Transmission Owner for such costs on a fully grossed-up basis, in accordance with Article 5.17.4, within thirty (30) Calendar Days of receiving written notification from Connecting Transmission Owner of the amount due, including detail about how the amount was calculated.

This indemnification obligation shall terminate at the earlier of (1) the expiration of the ten-year testing period and the applicable statute of limitation, as it may be extended by Connecting Transmission Owner upon request of the IRS, to keep these years open for audit or adjustment, or (2) the occurrence of a subsequent taxable event and the payment of any related indemnification obligations as contemplated by this Article 5.17.

5.17.4 Tax Gross-Up Amount.

RG&E's liability for the cost consequences of any current tax liability under this Article 5.17 shall be calculated on a fully grossed-up basis. Except as may otherwise be agreed to by the Parties, this means that RG&E will pay Connecting Transmission Owner, in addition to the amount paid for the Connecting Transmission Owner Attachment Facilities and Network Upgrade Facilities, an amount equal to (1) the current taxes imposed on Connecting Transmission Owner ("Current Taxes") on the excess of (a) the gross income realized by Connecting Transmission Owner as a result of payments or property transfers made by RG&E to Connecting Transmission Owner under this Agreement (without regard to any payments under this Article 5.17) (the "Gross Income Amount") over (b) the present value of future tax deductions for depreciation that will be available as a result of such payments or property transfers (the "Present Value Depreciation Amount"), plus (2) an additional amount sufficient to permit Connecting Transmission Owner to receive and retain, after the payment of all Current Taxes, an amount equal to the net amount described in clause (1).

For this purpose, (i) Current Taxes shall be computed based on Connecting Transmission Owner's composite federal and state tax rates at the time the payments or property transfers are received and Connecting Transmission Owner will be treated as being subject to tax at the highest marginal rates in effect at that time (the "Current Tax Rate"), and (ii) the Present Value Depreciation Amount shall be computed by discounting Connecting Transmission Owner's anticipated tax depreciation deductions as a result of such payments or property transfers by Connecting Transmission Owner's current weighted average cost of capital. Thus, the formula for calculating RG&E's liability to Connecting Transmission Owner pursuant to this Article 5.17.4 can be expressed as follows: $(\text{Current Tax Rate} \times (\text{Gross Income Amount} - \text{Present Value of Tax Depreciation})) / (1 - \text{Current Tax Rate})$. RG&E's estimated tax liability in the event taxes are imposed shall be stated in Appendix A, Connecting Transmission Owner Attachment Facilities and Network Upgrade Facilities.

5.17.5 Private Letter Ruling or Change or Clarification of Law.

At RG&E's request and expense, Connecting Transmission Owner shall file with the IRS a request for a private letter ruling as to whether any property transferred or sums paid, or to be paid, by RG&E to Connecting Transmission Owner under this Agreement are subject to federal income taxation. RG&E will prepare the initial draft of the request for a private letter ruling, and will certify under penalties of perjury that all facts represented in such request are true and

accurate to the best of RG&E's knowledge. Connecting Transmission Owner and RG&E shall cooperate in good faith with respect to the submission of such request.

Connecting Transmission Owner shall keep RG&E fully informed of the status of such request for a private letter ruling and shall execute either a privacy act waiver or a limited power of attorney, in a form acceptable to the IRS, that authorizes RG&E to participate in all discussions with the IRS regarding such request for a private letter ruling. Connecting Transmission Owner shall allow RG&E to attend all meetings with IRS officials about the request and shall permit RG&E to prepare the initial drafts of any follow-up letters in connection with the request.

5.17.6 Subsequent Taxable Events.

If, within 10 years from the date on which the relevant Connecting Transmission Owner Attachment Facilities are placed in service, (i) RG&E Breaches the covenants contained in Article 5.17.2, or (ii) this Agreement terminates and Connecting Transmission Owner retains ownership of the Connecting Transmission Owner Attachment Facilities and Network Upgrade Facilities, RG&E shall pay a tax gross-up for the cost consequences of any current tax liability imposed on Connecting Transmission Owner, calculated using the methodology described in Article 5.17.4 and in accordance with IRS Notice 90-60.

5.17.7 Contests.

In the event any Governmental Authority determines that Connecting Transmission Owner's receipt of payments or property constitutes income that is subject to taxation, Connecting Transmission Owner shall notify RG&E, in writing, within thirty (30) Calendar Days of receiving notification of such determination by a Governmental Authority. Upon the timely written request by RG&E and at RG&E's sole expense, Connecting Transmission Owner may appeal, protest, seek abatement of, or otherwise oppose such determination. Upon RG&E's written request and sole expense, Connecting Transmission Owner may file a claim for refund with respect to any taxes paid under this Article 5.17, whether or not it has received such a determination. Connecting Transmission Owner reserves the right to make all decisions with regard to the prosecution of such appeal, protest, abatement or other contest, including the selection of counsel and compromise or settlement of the claim, but Connecting Transmission Owner shall keep RG&E informed, shall consider in good faith suggestions from RG&E about the conduct of the contest, and shall reasonably permit RG&E or an RG&E representative to attend contest proceedings.

RG&E shall pay to Connecting Transmission Owner on a periodic basis, as invoiced by Connecting Transmission Owner, Connecting Transmission Owner's documented reasonable costs of prosecuting such appeal, protest, abatement or other contest. At any time during the contest, Connecting Transmission Owner may agree to a settlement either with RG&E's consent or after obtaining written advice from nationally-recognized tax counsel, selected by Connecting Transmission Owner, but reasonably acceptable to RG&E, that the proposed settlement represents a reasonable settlement given the hazards of litigation. RG&E's obligation shall be based on the amount of the settlement agreed to by RG&E, or if a higher amount, so much of the settlement that is supported by the written advice from nationally-recognized tax counsel

selected under the terms of the preceding sentence. The settlement amount shall be calculated on a fully grossed-up basis to cover any related cost consequences of the current tax liability. Any settlement without RG&E's consent or such written advice will relieve RG&E from any obligation to indemnify Connecting Transmission Owner for the tax at issue in the contest.

5.17.8 Refund.

In the event that (a) a private letter ruling is issued to Connecting Transmission Owner which holds that any amount paid or the value of any property transferred by RG&E to Connecting Transmission Owner under the terms of this Agreement is not subject to federal income taxation, (b) any legislative change or administrative announcement, notice, ruling or other determination makes it reasonably clear to Connecting Transmission Owner in good faith that any amount paid or the value of any property transferred by RG&E to Connecting Transmission Owner under the terms of this Agreement is not taxable to Connecting Transmission Owner, (c) any abatement, appeal, protest, or other contest results in a determination that any payments or transfers made by RG&E to Connecting Transmission Owner are not subject to federal income tax, or (d) if Connecting Transmission Owner receives a refund from any taxing authority for any overpayment of tax attributable to any payment or property transfer made by RG&E to Connecting Transmission Owner pursuant to this Agreement, Connecting Transmission Owner shall promptly refund to RG&E the following:

(i) Any payment made by RG&E under this Article 5.17 for taxes that is attributable to the amount determined to be non-taxable, together with interest thereon,

(ii) Interest on any amounts paid by RG&E to Connecting Transmission Owner for such taxes which Connecting Transmission Owner did not submit to the taxing authority, calculated in accordance with the methodology set forth in FERC's regulations at 18 C.F.R. §35.19a(a)(2)(iii) from the date payment was made by RG&E to the date Connecting Transmission Owner refunds such payment to RG&E, and

(iii) With respect to any such taxes paid by Connecting Transmission Owner, any refund or credit Connecting Transmission Owner receives or to which it may be entitled from any Governmental Authority, interest (or that portion thereof attributable to the payment described in clause (i), above) owed to Connecting Transmission Owner for such overpayment of taxes (including any reduction in interest otherwise payable by Connecting Transmission Owner to any Governmental Authority resulting from an offset or credit); provided, however, that Connecting Transmission Owner will remit such amount promptly to RG&E only after and to the extent that Connecting Transmission Owner has received a tax refund, credit or offset from any Governmental Authority for any applicable overpayment of income tax related to the Connecting Transmission Owner Attachment Facilities.

The intent of this provision is to leave both RG&E and Connecting Transmission Owner, to the extent practicable, in the event that no taxes are due with respect to any payment for Connecting Transmission Owner Attachment Facilities and Network Upgrade Facilities hereunder, in the same position they would have been in had no such tax payments been made.

5.17.9 Taxes Other Than Income Taxes.

Upon the timely request by RG&E, and at RG&E's sole expense, Connecting Transmission Owner shall appeal, protest, seek abatement of, or otherwise contest any tax (other than federal or state income tax) asserted or assessed against Connecting Transmission Owner for which RG&E may be required to reimburse Connecting Transmission Owner under the terms of this Agreement. RG&E shall pay to Connecting Transmission Owner on a periodic basis, as invoiced by Connecting Transmission Owner, Connecting Transmission Owner's documented reasonable costs of prosecuting such appeal, protest, abatement, or other contest. RG&E and Connecting Transmission Owner shall cooperate in good faith with respect to any such contest. Unless the payment of such taxes is a prerequisite to an appeal or abatement or cannot be deferred, no amount shall be payable by RG&E to Connecting Transmission Owner for such taxes until they are assessed by a final, nonappealable order by any court or agency of competent jurisdiction. In the event that a tax payment is withheld and ultimately due and payable after appeal, RG&E will be responsible for all taxes, interest and penalties, other than penalties attributable to any delay caused by Connecting Transmission Owner.

5.18 Tax Status; Non-Jurisdictional Entities.

5.18.1 Tax Status.

Each Party shall cooperate with the other Parties to maintain the other Parties' tax status. Nothing in this Agreement is intended to adversely affect the tax status of any Party, or the status of any Connecting Transmission Owner with respect to the issuance of bonds including, but not limited to, Local Furnishing Bonds. Notwithstanding any other provisions of this Agreement, Connected Transmission Owner shall not be required to comply with any provisions of this Agreement that would result in the loss of tax-exempt status of any of their Tax-Exempt Bonds or impair their ability to issue future tax-exempt obligations. For purposes of this provision, Tax-Exempt Bonds shall include the obligations of the Connecting Transmission Owner, NYPA, the interest on which is not included in gross income under the Internal Revenue Code.

5.18.2 Non-Jurisdictional Entities.

NYPA does not waive its exemptions, pursuant to Section 201(f) of the FPA, from Commission jurisdiction with respect to the Commission's exercise of the FPA's general ratemaking authority.

5.19 Modification.

5.19.1 General.

Either RG&E or Connecting Transmission Owner may undertake modifications to its facilities covered by this Agreement. If either RG&E or Connecting Transmission Owner plans to undertake a modification that reasonably may be expected to affect the other Party's facilities, that Party shall provide to the other Party, sufficient information regarding such modification so that the other Party may evaluate the potential impact of such modification prior to commencement of the work. Such information shall be deemed to be Confidential Information

hereunder and shall include information concerning the timing of such modifications and whether such modifications are expected to interrupt the transmission of electricity from the Transmission Facility. The Party desiring to perform such work shall provide the relevant drawings, plans, and specifications to the other Party at least ninety (90) Calendar Days in advance of the commencement of the work or such shorter period upon which the Parties may agree, which agreement shall not unreasonably be withheld, conditioned or delayed.

5.19.2 Standards.

Any additions, modifications, or replacements made to a Party's facilities shall be designed, constructed and operated in accordance with this Agreement, applicable NYISO requirements and Good Utility Practice.

5.19.3 Modification Costs.

RG&E shall not be assigned the costs of any additions, modifications, or replacements that Connecting Transmission Owner makes to Connecting Transmission Owner Attachment Facilities or the New York State Transmission System to facilitate the interconnection of a third party to the Connecting Transmission Owner Attachment Facilities or the New York State Transmission System, or to provide Transmission Service to a third party under the NYISO OATT, except in accordance with the cost allocation procedures in the NYISO OATT or as approved by the appropriate Governmental Authority. RG&E shall be responsible for the costs of any additions, modifications, or replacements to RG&E Attachment Facilities that may be necessary to maintain or upgrade such RG&E Attachment Facilities consistent with Applicable Laws and Regulations, Applicable Reliability Standards or Good Utility Practice.

ARTICLE 6. TESTING AND INSPECTION

6.1 Pre-Commercial Operation Date Testing and Modifications.

Prior to the Commercial Operation Date, Connecting Transmission Owner shall test the Connecting Transmission Owner Attachment Facilities and Network Upgrade Facilities, and RG&E shall test the Transmission Facility and RG&E Attachment Facilities to ensure their safe and reliable operation. Similar testing may be required after initial operation. RG&E and Connecting Transmission Owner shall each make any modifications to its facilities that are found to be necessary as a result of such testing. The Party requiring or requesting testing shall bear the cost of all such testing and modifications. The Parties shall transmit test energy over the Transmission Facility only if it has arranged for the injection of such test energy in accordance with Connecting Transmission Owner and NYISO procedures.

6.2 Post-Commercial Operation Date Testing and Modifications.

RG&E and Connecting Transmission Owner shall each at its own expense perform routine inspection and testing of its facilities and equipment in accordance with Good Utility Practice and Applicable Reliability Standards as may be necessary to ensure the continued interconnection of the Transmission Facility with the New York State Transmission System in a safe and reliable manner. RG&E and Connecting Transmission Owner shall each have the right,

upon advance written notice, to require reasonable additional testing of the other Party's facilities, at the requesting Party's expense, as may be in accordance with Good Utility Practice.

6.3 Right to Observe Testing.

RG&E and Connecting Transmission Owner shall each notify the other Party in advance of its performance of tests of its Attachment Facilities and the Transmission Facility. The other Party shall have the right, at its own expense, to observe such testing.

6.4 Right to Inspect.

RG&E and Connecting Transmission Owner shall each have the right, but shall have no obligation to: (i) observe the other Party's tests and/or inspection of any of its System Protection Facilities and other protective equipment; (ii) review the settings of the other Party's System Protection Facilities and other protective equipment; and (iii) review the other Party's maintenance records relative to the Attachment Facilities, the System Protection Facilities and other protective equipment. A Party may exercise these rights from time to time as it deems necessary upon reasonable notice to the other Party. The exercise or nonexercise by a Party of any such rights shall not be construed as an endorsement or confirmation of any element or condition of the Attachment Facilities or the System Protection Facilities or other protective equipment or the operation thereof, or as a warranty as to the fitness, safety, desirability, or reliability of same. Any information that a Party obtains through the exercise of any of its rights under this Article 6.4 shall be treated in accordance with Article 22 of this Agreement.

ARTICLE 7. METERING

7.1 General.

RG&E and Connecting Transmission Owner shall each comply with applicable requirements of NYISO and the New York Public Service Commission when exercising its rights and fulfilling its responsibilities under this Article 7. Unless otherwise agreed by Connecting Transmission Owner and RG&E, Connecting Transmission Owner shall install Metering Equipment at the Point of Interconnection prior to any operation of the Transmission Facility and shall own, operate, test and maintain such Metering Equipment. Net power flows including MW and MVAR, MWHR and loss profile data to and from the Transmission Facility shall be measured at the Point of Interconnection. Connecting Transmission Owner shall provide metering quantities, in analog and/or digital form, as required, to RG&E upon request. RG&E shall bear all reasonable documented costs associated with the purchase, installation, operation, testing and maintenance of the Metering Equipment.

7.2 Check Meters.

RG&E, at its option and expense, may install and operate, on its premises and on its side of the Point of Interconnection, one or more check meters to check Connecting Transmission Owner's meters. Such check meters shall be for check purposes only and shall not be used for the measurement of power flows for purposes of this Agreement, except as provided in Article

7.4 below. The check meters shall be subject at all reasonable times to inspection and examination by Connecting Transmission Owner or its designee. The installation, operation and maintenance thereof shall be performed entirely by RG&E in accordance with Good Utility Practice.

7.3 Standards.

Connecting Transmission Owner shall install, calibrate, and test revenue quality Metering Equipment including potential transformers and current transformers in accordance with applicable ANSI and PSC standards as detailed in the NYISO Control Center Communications Manual and in the NYISO Revenue Metering Requirements Manual.

7.4 Testing of Metering Equipment.

Connecting Transmission Owner shall inspect and test all of its Metering Equipment upon installation and at least once every two (2) years thereafter for metering accuracy test and inspection of metering equipment. If requested to do so by RG&E, Connecting Transmission Owner shall, at RG&E's expense, inspect or test Metering Equipment more frequently than every two (2) years. Connecting Transmission Owner shall give reasonable notice of the time when any inspection or test shall take place, and RG&E may have representatives present at the test or inspection. If at any time Metering Equipment is found to be inaccurate or defective, it shall be adjusted, repaired or replaced at RG&E's expense, in order to provide accurate metering, unless the inaccuracy or defect is due to Connecting Transmission Owner's failure to maintain, then Connecting Transmission Owner shall pay. If Metering Equipment fails to register, or if the measurement made by Metering Equipment during a test varies by more than two percent from the measurement made by the standard meter used in the test, Connecting Transmission Owner shall adjust the measurements by correcting all measurements for the period during which Metering Equipment was in error by using RG&E's check meters, if installed. If no such check meters are installed or if the period cannot be reasonably ascertained, the adjustment shall be for the period immediately preceding the test of the Metering Equipment equal to one-half the time from the date of the last previous test of the Metering Equipment.

7.5 Metering Data.

At RG&E's expense, the metered data shall be telemetered to one or more locations designated by Connecting Transmission Owner and RG&E. Such telemetered data shall be used, under normal operating conditions, as the official measurement of the amount of energy delivered from the Transmission Facility to the Point of Interconnection.

ARTICLE 8. COMMUNICATIONS

8.1 RG&E Obligations.

In accordance with NYISO applicable requirements, RG&E shall maintain satisfactory operating communications with Connecting Transmission Owner. RG&E shall provide the dedicated data circuit(s) necessary to provide RG&E data to Connecting Transmission Owner

and the NYISO as set forth in Appendix D hereto. The data circuit(s) shall extend from the Transmission Facility to the location(s) specified by Connecting Transmission Owner. Any required maintenance of such communications equipment shall be performed by RG&E. Operational communications shall be activated and maintained under, but not be limited to, the following events: system paralleling or separation, scheduled and unscheduled outages, equipment clearances, and hourly and daily load data.

8.2 Remote Terminal Unit.

Prior to the Initial Energization Date of the Transmission Facility, a Remote Terminal Unit, or equivalent data collection and transfer equipment acceptable to the Parties, shall be installed by RG&E, or by Connecting Transmission Owner at RG&E's expense, or an existing Remote Terminal Unit shall be modified by Connecting Transmission Owner, to gather accumulated and instantaneous data to be telemetered to the location(s) designated by Connecting Transmission Owner through use of a dedicated point-to-point data circuit(s) as indicated in Article 8.1. The communication protocol for the data circuit(s) shall be specified by Connecting Transmission Owner. Instantaneous bi-directional analog real power and reactive power flow information must be telemetered directly to the location(s) specified by Connecting Transmission Owner.

Each Party will promptly advise the appropriate other Party if it detects or otherwise learns of any metering, telemetry or communications equipment errors or malfunctions that require the attention and/or correction by that other Party. The Party owning such equipment shall correct such error or malfunction as soon as reasonably feasible.

8.3 No Annexation.

Any and all equipment placed on the premises of a Party shall be and remain the property of the Party providing such equipment regardless of the mode and manner of annexation or attachment to real property, unless otherwise mutually agreed by the Party providing such equipment and the Party receiving such equipment.

ARTICLE 9. OPERATIONS

9.1 General.

Each Party shall comply with Applicable Laws and Regulations and Applicable Reliability Standards. Each Party shall provide to the other Parties all information that may reasonably be required by the other Parties to comply with Applicable Laws and Regulations and Applicable Reliability Standards.

9.2 Connecting Transmission Owner Obligations.

Connecting Transmission Owner shall cause the Connecting Transmission Owner Attachment Facilities to be operated, maintained and controlled in a safe and reliable manner in accordance with this Agreement.

9.3 RG&E Obligations.

RG&E shall at its own expense operate, maintain and control the Transmission Facility and RG&E Attachment Facilities in a safe and reliable manner and in accordance with this Agreement.

9.4 Energization.

Consistent with the mutually acceptable procedures of RG&E and Connecting Transmission Owner, RG&E is responsible for the proper energization of the Transmission Facility to the New York State Transmission System in accordance with Connecting Transmission Owner procedures and requirements.

9.5 [Reserved].

9.6 Outages and Interruptions.

9.6.1 Outages.

9.6.1.1 Outage Authority and Coordination. RG&E and Connecting Transmission Owner may each, in accordance with applicable NYISO procedures and Good Utility Practice and in coordination with the other Party, remove from service any of its respective Attachment Facilities or Network Upgrade Facilities that may impact the other Party's facilities as necessary to perform maintenance or testing or to install or replace equipment. Absent an Emergency State, the Party scheduling a removal of such facility(ies) from service will use Reasonable Efforts to schedule such removal on a date and time mutually acceptable to both RG&E and Connecting Transmission Owner. In all circumstances either Party planning to remove such facility (ies) from service shall use Reasonable Efforts to minimize the effect on the other Party of such removal.

9.6.1.2 Outage Schedules. Connecting Transmission Owner and RG&E shall post scheduled outages of its transmission facilities on the NYISO OASIS.

9.6.1.3 Outage Restoration. If an outage on the Attachment Facilities or Network Upgrade Facilities of Connecting Transmission Owner or RG&E adversely affects the other Party's operations or facilities, the Party that owns the facility that is out of service shall use Reasonable Efforts to promptly restore such facility(ies) to a normal operating condition consistent with the nature of the outage. The Party that owns the facility that is out of service shall provide the other Party, to the extent such information is known, information on the nature of the Emergency State, an estimated time of restoration, and any corrective actions required. Initial verbal notice shall be followed up as soon as practicable with written notice explaining the nature of the outage.

9.6.2 Interruption of Service. If required by Good Utility Practice or Applicable Reliability Standards to do so, Connecting Transmission Owner may require RG&E to interrupt or reduce transmission of electricity over the Transmission Facility and RG&E may require Connecting Transmission Owner to interrupt or reduce transmission of

electricity over its transmission facilities if either Connecting Transmission Owner or RG&E deems the interruption of such transmission of electricity to be necessary (a) for purposes of Good Utility Practice, to protect a Party's facilities from physical damage or to prevent injury or damage to persons or property, or (b) to comply with Applicable Reliability Standards. The following provisions shall apply to any interruption or reduction permitted under this Article 9.6.2:

9.6.2.1 The interruption or reduction shall continue only for so long as reasonably necessary to: (a) protect its facilities from physical damage or to prevent injury or damage to persons or property under Good Utility Practice; or (b) comply with Applicable Reliability Standards;

9.6.2.2 Any such interruption or reduction shall be made on an equitable, non-discriminatory basis with respect to all transmission facilities directly connected to that part of the New York State Transmission System owned by Connecting Transmission Owner or RG&E;

9.6.2.3 When the interruption or reduction must be made under circumstances which do not allow for advance notice, Connecting Transmission Owner or RG&E, as applicable, shall notify the other Party by telephone as soon as practicable of the reasons for the curtailment, interruption, or reduction, and, if known, its expected duration. Telephone notification shall be followed by written notification as soon as practicable;

9.6.2.4 Except during the existence of an Emergency State, when the interruption or reduction can be scheduled without advance notice, Connecting Transmission Owner or RG&E, as applicable, shall notify the other Party in advance regarding the timing of such scheduling and further notify RG&E of the expected duration. Connecting Transmission Owner and RG&E, as applicable, shall coordinate with the other Party using Good Utility Practice to schedule the interruption or reduction during periods of least impact to both Parties and the New York State Transmission System; and

9.6.2.5 The Parties shall cooperate and coordinate with each other and the NYISO to the extent necessary in order to restore the Transmission Facility, Attachment Facilities, and the New York State Transmission System to their normal operating state, consistent with system conditions and Good Utility Practice, and in accordance with the directives of the NYISO.

9.6.3 Under/Frequency and Over Frequency Conditions. The New York State Transmission System is designed to automatically activate a load-shed program as required by the NPCC in the event of an under frequency system disturbance. To the extent that such an obligation is applicable to RG&E, RG&E shall implement under/frequency and over-frequency relay set points for the Transmission Facility as required by the NPCC to ensure "ride through" capability of the New York State Transmission System. Transmission Facility response to frequency deviations of predetermined magnitudes, both under-frequency and over-frequency deviations, shall be studied and coordinated with Connecting Transmission Owner and the NYISO in accordance with Good Utility Practice. The term "ride through" as used herein shall mean the ability of the Transmission Facility to stay connected to and

synchronized with the New York State Transmission System during system disturbances within a range of under-frequency and over-frequency conditions, in accordance with Good Utility Practice and with NPCC criteria A-3.

9.6.4 System Protection and Other Control Requirements.

9.6.4.1 System Protection Facilities. RG&E shall, at its expense, install, operate and maintain System Protection Facilities as a part of the Transmission Facility or RG&E Attachment Facilities. Connecting Transmission Owner shall install at RG&E's expense any System Protection Facilities that may be required on the Connecting Transmission Owner Attachment Facilities or the New York State Transmission System as a result of the interconnection of the Transmission Facility and RG&E Attachment Facilities.

9.6.4.2 The protection facilities of both RG&E and Connecting Transmission Owner shall be designed and coordinated with other systems in accordance with Good Utility Practice and Applicable Reliability Standards.

9.6.4.3 RG&E and Connecting Transmission Owner shall each be responsible for protection of its respective facilities consistent with Good Utility Practice and Applicable Reliability Standards.

9.6.4.4 The protective relay design of RG&E and Connecting Transmission Owner shall each incorporate the necessary test switches to perform the tests required in Article 6 of this Agreement. The required test switches will be placed such that they allow operation of lockout relays while preventing breaker failure schemes from operating and causing unnecessary breaker operations and/or the tripping of RG&E's Transmission Facility, or Connecting Transmission Owner Attachment Facilities.

9.6.4.5 RG&E and Connecting Transmission Owner will each test, operate and maintain System Protection Facilities in accordance with Good Utility Practice and NPCC criteria.

9.6.4.6 Prior to Commercial Operation Date, RG&E and Connecting Transmission Owner shall each perform, or their agents shall perform, a complete calibration test and functional trip test of the System Protection Facilities. At intervals suggested by Good Utility Practice and following any apparent malfunction of the System Protection Facilities, RG&E and Connecting Transmission Owner shall each perform both calibration and functional trip tests of the System Protection Facilities in a manner and at intervals consistent with Connecting Transmission Owner's standard practice for performing such tests. These tests do not require the tripping of any in-service generation unit. These tests do, however, require that all protective relays and lockout contacts be activated.

9.6.5 Requirements for Protection.

In compliance with NPCC requirements and Good Utility Practice, each Party shall provide, install, own, and maintain relays, circuit breakers and all other devices necessary to remove any fault contribution of the Transmission Facility to any short circuit occurring on the

New York State Transmission System not otherwise isolated by the other Party's equipment, such that the removal of the fault contribution shall be coordinated with the protective requirements of the New York State Transmission System. Such protective equipment shall include, without limitation, a disconnecting device or switch with load-interrupting capability located between the Transmission Facility and the New York State Transmission System at a site selected upon mutual agreement (not to be unreasonably withheld, conditioned or delayed) of RG&E and Connecting Transmission Owner. RG&E shall be solely responsible to disconnect the Transmission Facility and RG&E's other equipment if conditions on the New York State Transmission System could adversely affect the Transmission Facility.

9.6.6 Power Quality.

Neither the facilities of RG&E nor the facilities of Connecting Transmission Owner shall cause excessive voltage flicker nor introduce excessive distortion to the sinusoidal voltage or current waves as defined by ANSI Standard C84.1-1989, in accordance with IEEE Standard 519, or any applicable superseding electric industry standard. In the event of a conflict between ANSI Standard C84.1-1989, or any applicable superseding electric industry standard, ANSI Standard C84.1-1989, or the applicable superseding electric industry standard, shall control.

9.7 Switching and Tagging Rules.

RG&E and Connecting Transmission Owner shall each provide the other Party a copy of its switching and tagging rules that are applicable to the other Party's activities. Such switching and tagging rules shall be developed on a nondiscriminatory basis. The Parties shall comply with applicable switching and tagging rules, as amended from time to time, in obtaining clearances for work or for switching operations on equipment.

9.8 Use of Attachment Facilities by Third Parties.

9.8.1 Purpose of Attachment Facilities.

Except as may be required by Applicable Laws and Regulations, or as otherwise agreed to among the Parties, the Attachment Facilities shall be constructed for the sole purpose as described herein.

9.8.2 Third Party Users.

If required by Applicable Laws and Regulations or if the Parties mutually agree, such agreement not to be unreasonably withheld, to allow one or more third parties to use the Connecting Transmission Owner's Attachment Facilities, or any part thereof, RG&E will be entitled to compensation for the capital expenses it incurred in connection with the Attachment Facilities based upon the pro rata use of the Attachment Facilities by Connecting Transmission Owner, all third party users, and RG&E, in accordance with Applicable Laws and Regulations or upon some other mutually-agreed upon methodology. In addition, cost responsibility for ongoing costs, including operation and maintenance costs associated with the Attachment Facilities, will be allocated between RG&E and any third party users based upon the pro rata use of the Attachment Facilities by Connecting Transmission Owner, all third party users, and RG&E, in accordance

with Applicable Laws and Regulations or upon some other mutually agreed upon methodology. If the issue of such compensation or allocation cannot be resolved through such negotiations, it shall be submitted to FERC for resolution.

9.9 Disturbance Analysis Data Exchange.

The Parties will cooperate with one another in the analysis of disturbances to either the Transmission Facility or the New York State Transmission System by gathering and providing access to any information relating to any disturbance, including information from disturbance recording equipment, protective relay targets, breaker operations and sequence of events records, and any disturbance information required by Good Utility Practice.

ARTICLE 10. MAINTENANCE

10.1 Connecting Transmission Owner Obligations.

Connecting Transmission Owner shall maintain the Connecting Transmission Owner Attachment Facilities in a safe and reliable manner and in accordance with this Agreement.

10.2 RG&E Obligations.

RG&E shall maintain its Transmission Facility and the RG&E Attachment Facilities in a safe and reliable manner and in accordance with this Agreement.

10.3 Coordination.

RG&E and Connecting Transmission Owner shall confer regularly to coordinate the planning, scheduling and performance of preventive and corrective maintenance on the Transmission Facility and the Attachment Facilities. As required by Applicable Laws and Regulations, RG&E and Connecting Transmission Owner shall keep NYISO fully informed of the preventive and corrective maintenance that is planned, and shall schedule all such maintenance in accordance with NYISO procedures.

10.4 Secondary Systems.

RG&E and Connecting Transmission Owner shall each cooperate with the other in the inspection, maintenance, and testing of control or power circuits that operate below 600 volts, AC or DC, including, but not limited to, any hardware, control or protective devices, cables, conductors, electric raceways, secondary equipment panels, transducers, batteries, chargers, and voltage and current transformers that directly affect the operation of RG&E or Connecting Transmission Owner's facilities and equipment which may reasonably be expected to impact the other Party. RG&E and Connecting Transmission Owner shall each provide advance notice to the other Party before undertaking any work on such circuits, especially on electrical circuits involving circuit breaker trip and close contacts, current transformers, or potential transformers.

10.5 Operating and Maintenance Expenses.

Subject to the provisions herein addressing the use of facilities by others, and except for operations and maintenance expenses associated with modifications made for providing interconnection or transmission service to a third party and such third party pays for such expenses, RG&E shall be responsible for all reasonable expenses including overheads, associated with: (1) owning, operating, maintaining, repairing, and replacing RG&E Attachment Facilities; and (2) operation, maintenance, repair and replacement of Connecting Transmission Owner Attachment Facilities. The Connecting Transmission Owner shall be entitled to the recovery of incremental operating and maintenance expenses that it incurs associated with Network Upgrade Facilities.

ARTICLE 11. PERFORMANCE OBLIGATION

11.1 RG&E Attachment Facilities.

RG&E shall design, procure, construct, install, own and/or control RG&E Attachment Facilities described in Appendix A hereto, at its sole expense.

11.2 Connecting Transmission Owner Attachment Facilities.

Connecting Transmission Owner shall design, procure, construct, install, own and/or control the Connecting Transmission Owner Attachment Facilities described in Appendix A hereto, at the sole expense of RG&E.

11.3 Network Upgrade Facilities.

Upon mutual agreement of the Parties, RG&E may design, procure, construct, install, and own the Stand-Alone Network Upgrade Facilities described in Appendix A hereto, at its own expense. RG&E shall design, procure, construct, and install the Network Upgrade Facilities described in Appendix A hereto, at RG&E's expense.

11.4 Special Provisions for Affected Systems.

For the re-payment of amounts advanced to Affected System Operator for Network Upgrade Facilities, RG&E and Affected System Operator shall enter into an agreement that provides for such re-payment. The agreement shall specify the terms governing payments to be made by RG&E to the Affected System Operator as well as the re-payment by the Affected System Operator.

11.5 Provision of Security.

At least thirty (30) Calendar Days prior to the commencement of the procurement, installation, or construction of a discrete portion of a Connecting Transmission Owner Attachment Facilities or Network Upgrade Facilities, RG&E shall provide Connecting Transmission Owner, at RG&E's option, a guarantee, a surety bond, letter of credit or other form of security that is reasonably acceptable to Connecting Transmission Owner and is consistent

with the Uniform Commercial Code of the jurisdiction identified in Article 14.2.1 of this Agreement. Such security for payment shall be in an amount sufficient to cover the cost for RG&E's share of constructing, procuring and installing the applicable portion of Connecting Transmission Owner Attachment Facilities or Network Upgrade Facilities, and shall be reduced on a dollar-for-dollar basis for payments made to Connecting Transmission Owner for these purposes.

In addition:

11.5.1 The guarantee must be made by an entity that meets the commercially reasonable creditworthiness requirements of Connecting Transmission Owner, and contains terms and conditions that guarantee payment of any amount that may be due from RG&E, up to an agreed maximum amount.

11.5.2 The letter of credit must be issued by a financial institution reasonably acceptable to Connecting Transmission Owner and must specify a reasonable expiration date.

11.5.3 The surety bond must be issued by an insurer reasonably acceptable to Connecting Transmission Owner and must specify a reasonable expiration date.

11.6 RG&E Compensation for Emergency Services.

If, during an Emergency State, RG&E provides services at the request or direction of the NYISO or Connecting Transmission Owner, RG&E will be compensated for such services in accordance with the Services Tariff.

11.7 Line Outage Costs.

Notwithstanding anything in Applicable Laws and Regulations to the contrary, Connecting Transmission Owner may propose to recover line outage costs associated with the installation of Connecting Transmission Owner Attachment Facilities or Network Upgrade Facilities on a case-by-case basis.

ARTICLE 12. INVOICE

12.1 General.

RG&E and Connecting Transmission Owner shall each submit to the other Party, on a monthly basis, invoices of amounts due for the preceding month. Each invoice shall state the month to which the invoice applies and fully describe the services and equipment provided. RG&E and Connecting Transmission Owner may discharge mutual debts and payment obligations due and owing to each other on the same date through netting, in which case all amounts one Party owes to the other Party under this Agreement, including interest payments or credits, shall be netted so that only the net amount remaining due shall be paid by the owing Party. The allocation of any costs, expenses, or charges to either RG&E or Connecting Transmission Owner under this Agreement shall not in any way limit the right of RG&E or

Connecting Transmission Owner to collect such costs or charges in rates approved by the appropriate Governmental Authority.

12.2 [Reserved]

12.3 Payment.

Invoices shall be rendered to the paying Party at the address specified in Appendix F hereto. The Party receiving the invoice shall pay the invoice within thirty (30) Calendar Days of receipt. All payments shall be made in immediately available funds payable to the other Party, or by wire transfer to a bank named and account designated by the invoicing Party. Payment of invoices will not constitute a waiver of any rights or claims the paying Party may have under this Agreement.

12.4 Disputes.

In the event of a billing dispute between Connecting Transmission Owner and RG&E, Connecting Transmission Owner shall continue to perform under this Agreement as long as RG&E: (i) continues to make all payments not in dispute; and (ii) pays to Connecting Transmission Owner or into an independent escrow account the portion of the invoice in dispute, pending resolution of such dispute. If RG&E fails to meet these two requirements for continuation of service, then Connecting Transmission Owner may provide notice to RG&E of a Default pursuant to Article 17. Billing disputes shall be subject to resolution in accordance with Article 27. Within thirty (30) Calendar Days after the resolution of the dispute, the Party that owes money to the other Party shall pay the amount due with interest calculated in accord with the methodology set forth in FERC's Regulations at 18 C.F.R. § 35.19a(a)(2)(iii).

ARTICLE 13. EMERGENCIES

13.1 Obligations.

Each Party shall comply with the Emergency State procedures of NYISO, the applicable Reliability Councils, Applicable Laws and Regulations, and any emergency procedures agreed to by the NYISO Operating Committee.

13.2 Notice.

Connecting Transmission Owner shall notify RG&E promptly when it becomes aware of an Emergency State that affects the Connecting Transmission Owner Attachment Facilities or the New York State Transmission System that may reasonably be expected to affect RG&E's operation of the Transmission Facility

or the RG&E Attachment Facilities. RG&E shall notify Connecting Transmission Owner

promptly when it becomes aware of an Emergency State that affects the Transmission Facility or the RG&E Attachment Facilities that may reasonably be expected to affect the New York State Transmission System or the Connecting Transmission Owner Attachment Facilities. To the extent information is known, the notification shall describe the Emergency State, the extent of the damage or deficiency, the expected effect on the operation of RG&E's or Connecting Transmission Owner's facilities and operations, its anticipated duration and the corrective action taken and/or to be taken. The initial notice shall be followed as soon as practicable with written notice.

13.3 Immediate Action.

Unless, in RG&E's reasonable judgment, immediate action is required, RG&E shall obtain the consent of Connecting Transmission Owner, such consent to not be unreasonably withheld, prior to performing any manual switching operations at the Transmission Facility or RG&E Attachment Facilities in response to an Emergency State either declared by NYISO, Connecting Transmission Owner or otherwise regarding New York State Transmission System. Unless, in Connecting Transmission Owner's reasonable judgment, immediate action is required, Connecting Transmission Owner shall obtain the consent of RG&E, such consent not to be unreasonably withheld, prior to performing any manual switching operations at the Connecting Transmission Owner Attachment Facilities in response to an Emergency State either declared by NYISO, Connecting Transmission Owner, or otherwise regarding the New York State Transmission System.

13.4 Connecting Transmission Owner Authority.

13.4.1 General.

Connecting Transmission Owner may take whatever actions with regard to the New York State Transmission System or the Connecting Transmission Owner Attachment Facilities it deems necessary during an Emergency State in order to (i) preserve public health and safety, (ii) preserve the reliability of the New York State Transmission System or the Connecting Transmission Owner Attachment Facilities, (iii) limit or prevent damage, and (iv) expedite restoration of service.

13.5 RG&E Authority.

Consistent with Good Utility Practice and this Agreement, RG&E may take whatever actions or inactions with regard to the Transmission Facility or the RG&E Attachment Facilities during an Emergency State in order to (i) preserve public health and safety, (ii) preserve the reliability of the Transmission Facility or the RG&E Attachment Facilities, (iii) limit or prevent damage, and (iv) expedite restoration of service. RG&E shall use Reasonable Efforts to minimize the effect of such actions or inactions on the New York State Transmission System and the Connecting Transmission Owner Attachment Facilities. Connecting Transmission Owner shall use Reasonable Efforts to assist RG&E in such actions.

13.6 Limited Liability.

Except as otherwise provided in Article 11.6 of this Agreement, no Party shall be liable to another Party for any action it takes in responding to an Emergency State so long as such action is made in good faith and is consistent with Good Utility Practice and the NYISO Tariffs.

ARTICLE 14. REGULATORY REQUIREMENTS AND GOVERNING LAW

14.1 Regulatory Requirements.

Each Party's obligations under this Agreement shall be subject to its receipt of any required approval or certificate from one or more Governmental Authorities in the form and substance satisfactory to the applying Party, or the Party making any required filings with, or providing notice to, such Governmental Authorities, and the expiration of any time period associated therewith. Each Party shall in good faith seek and use its Reasonable Efforts to obtain such other approvals. Nothing in this Agreement shall require Connecting Transmission Owner or RG&E to take any action that could result in its inability to obtain, or its loss of, status or exemption under the Federal Power Act, the Public Utility Holding Company Act of 2005 or the Public Utility Regulatory Policies Act of 1978, as amended.

14.2 Governing Law.

14.2.1 The validity, interpretation and performance of this Agreement and each of its provisions shall be governed by the laws of the State of New York, without regard to its conflicts of law principles.

14.2.2 This Agreement is subject to all Applicable Laws and Regulations.

14.2.3 Each Party expressly reserves the right to seek changes in, appeal, or otherwise contest any law, orders, rules, or regulations of a Governmental Authority.

14.2.4 Each Party acknowledges and agrees that the provisions of Attachments S and Attachment X of the NYISO Open Access Transmission Tariff ("OATT"), including the cost-allocation rules and procedures applicable to Attachment Facilities as defined in the NYISO OATT, shall not be applicable to or binding upon the parties to this Agreement.

ARTICLE 15. NOTICES

15.1 General.

Unless otherwise provided in this Agreement, any notice, demand or request required or permitted to be given by a Party to the other Parties and any instrument required or permitted to be tendered or delivered by a Party in writing to the other Parties shall be effective when delivered and may be so given, tendered or delivered, by recognized national courier, or by depositing the same with the United States Postal Service with postage prepaid, for delivery by

certified or registered mail, addressed to the Party, or personally delivered to the Party, at the address set out in Appendix F hereto.

A Party may change the notice information in this Agreement by giving five (5) Business Days written notice prior to the effective date of the change.

15.2 Billings and Payments.

Billings and payments shall be sent to the addresses set out in Appendix F hereto.

15.3 Alternative Forms of Notice.

Any notice or request required or permitted to be given by a Party to the other Parties and not required by this Agreement to be given in writing may be so given by telephone, facsimile or email to the telephone numbers and email addresses set out in Appendix F hereto.

15.4 Operations and Maintenance Notice.

RG&E and Connecting Transmission Owner shall each notify the other Party in writing of the identity of the person(s) that it designates as the point(s) of contact with respect to the implementation of Articles 9 and 10 of this Agreement.

ARTICLE 16. FORCE MAJEURE

16.1 Force Majeure.

16.1.1 Economic hardship is not considered a Force Majeure event.

16.1.2 A Party shall not be responsible or liable, or deemed, in Default with respect to any obligation hereunder, (including obligations under Article 4 of this Agreement) , other than the obligation to pay money when due, to the extent the Party is prevented from fulfilling such obligation by Force Majeure. A Party unable to fulfill any obligation hereunder (other than an obligation to pay money when due) by reason of Force Majeure shall give notice and the full particulars of such Force Majeure to the other Parties in writing or by telephone as soon as reasonably possible after the occurrence of the cause relied upon. Telephone notices given pursuant to this Article shall be confirmed in writing as soon as reasonably possible and shall specifically state full particulars of the Force Majeure, the time and date when the Force Majeure occurred and when the Force Majeure is reasonably expected to cease. The Party affected shall exercise due diligence to remove such disability with reasonable dispatch, but shall not be required to accede or agree to any provision not satisfactory to it in order to settle and terminate a strike or other labor disturbance.

ARTICLE 17. DEFAULT

17.1 Default.

17.1.1 General.

No Breach shall exist where such failure to discharge an obligation (other than the payment of money) is the result of Force Majeure as defined in this Agreement or the result of an act or omission of the other Parties. Upon a Breach, the non-Breaching Parties shall give written notice of such to the Breaching Party. The Breaching Party shall have thirty (30) Calendar Days from receipt of the Breach notice within which to cure such Breach; provided however, if such Breach is not capable of cure within thirty (30) Calendar Days, the Breaching Party shall commence such cure within thirty (30) Calendar Days after notice and continuously and diligently complete such cure within ninety (90) Calendar Days from receipt of the Breach notice; and, if cured within such time, the Breach specified in such notice shall cease to exist.

17.1.2 Right to Terminate.

If a Breach is not cured as provided in this Article 17, or if a Breach is not capable of being cured within the period provided for herein, the non-Breaching Parties acting together shall thereafter have the right to declare a Default and terminate this Agreement by written notice at any time until cure occurs, and be relieved of any further obligation hereunder and, whether or not those Parties terminate this Agreement, to recover from the defaulting Party all amounts due hereunder, plus all other damages and remedies to which they are entitled at law or in equity. The provisions of this Article will survive termination of this Agreement.

ARTICLE 18. INDEMNITY, CONSEQUENTIAL DAMAGES AND INSURANCE

18.1 Indemnity.

Each Party (the “Indemnifying Party”) shall at all times indemnify, defend, and save harmless, as applicable, the other Parties (each an “Indemnified Party”) from, any and all damages, losses, claims, including claims and actions relating to injury to or death of any person or damage to property, the alleged violation of any Environmental Law, or the release or threatened release of any Hazardous Substance, demand, suits, recoveries, costs and expenses, court costs, attorney fees, and all other obligations by or to third parties, arising out of or resulting from (i) the Indemnified Party’s performance of its obligations under this Agreement on behalf of the Indemnifying Party, except in cases where the Indemnifying Party can demonstrate that the Loss of the Indemnified Party was caused by the gross negligence or intentional wrongdoing of the Indemnified Party or (ii) the violation by the Indemnifying Party of any Environmental Law or the release by the Indemnifying Party of any Hazardous Substance.

18.1.1 Indemnified Party.

If a Party is entitled to indemnification under this Article 18 as a result of a claim by a third party, and the indemnifying Party fails, after notice and reasonable opportunity to proceed under Article 18.1.3, to assume the defense of such claim, such Indemnified Party may at the expense of the Indemnifying Party contest, settle or consent to the entry of any judgment with respect to, or pay in full, such claim.

18.1.2 Indemnifying Party.

If an Indemnifying Party is obligated to indemnify and hold any Indemnified Party harmless under this Article 18, the amount owing to the Indemnified Party shall be the amount of such Indemnified Party’s actual Loss, net of any insurance or other recovery.

18.1.3 Indemnity Procedures.

Promptly after receipt by an Indemnified Party of any claim or notice of the commencement of any action or administrative or legal proceeding or investigation as to which the indemnity provided for in Article 18.1 may apply, the Indemnified Party shall notify the Indemnifying Party of such fact. Any failure of or delay in such notification shall not affect a Party’s indemnification obligation unless such failure or delay is materially prejudicial to the Indemnifying Party.

Except as stated below, the Indemnifying Party shall have the right to assume the defense thereof with counsel designated by such Indemnifying Party and reasonably satisfactory to the Indemnified Party. If the defendants in any such action include one or more Indemnified Parties and the Indemnifying Party and if the Indemnified Party reasonably concludes that there may be legal defenses available to it and/or other Indemnified Parties which are different from or additional to those available to the Indemnifying Party, the Indemnified Party shall have the right to select separate counsel to assert such legal defenses and to otherwise participate in the defense of such action on its own behalf. In such instances, the Indemnifying Party shall only be

required to pay the fees and expenses of one additional attorney to represent an Indemnified Party or Indemnified Parties having such differing or additional legal defenses.

The Indemnified Party shall be entitled, at its expense, to participate in any such action, suit or proceeding, the defense of which has been assumed by the Indemnifying Party. Notwithstanding the foregoing, the Indemnifying Party (i) shall not be entitled to assume and control the defense of any such action, suit or proceedings if and to the extent that, in the opinion of the Indemnified Party and its counsel, such action, suit or proceeding involves the potential imposition of criminal liability on the Indemnified Party, or there exists a conflict or adversity of interest between the Indemnified Party and the Indemnifying Party, in such event the Indemnifying Party shall pay the reasonable expenses of the Indemnified Party, and (ii) shall not settle or consent to the entry of any judgment in any action, suit or proceeding without the consent of the Indemnified Party, which shall not be unreasonably withheld, conditioned or delayed.

18.2 No Consequential Damages.

Other than the indemnity obligations set forth in Article 18.1, in no event shall any Party be liable under any provision of this Agreement for any losses, damages, costs or expenses for any special, indirect, incidental, consequential, or punitive damages, including but not limited to loss of profit or revenue, loss of the use of equipment, cost of capital, cost of temporary equipment or services, whether based in whole or in part in contract, in tort, including negligence, strict liability, or any other theory of liability; provided, however, that damages for which a Party may be liable to another Party under separate agreement will not be considered to be special, indirect, incidental, or consequential damages hereunder.

18.3 Insurance.

RG&E and Connecting Transmission Owner shall each, at its own expense, maintain in force throughout the period of this Agreement, and until released by the other Parties, the following minimum insurance coverages, with insurers authorized to do business in the state of New York:

18.3.1 Employers' Liability and Workers' Compensation Insurance providing statutory benefits in accordance with the laws and regulations of New York State.

18.3.2 Commercial General Liability Insurance including premises and operations, personal injury, broad form property damage, broad form blanket contractual liability coverage (including coverage for the contractual indemnification) products and completed operations coverage, coverage for explosion, collapse and underground hazards, independent contractors coverage, coverage for pollution to the extent normally available and punitive damages to the extent normally available and a cross liability endorsement, with minimum limits of Five Million Dollars (\$5,000,000) per occurrence/Five Million Dollars (\$5,000,000) aggregate combined single limit for personal injury, bodily injury, including death and property damage.

18.3.3 Comprehensive Automobile Liability Insurance for coverage of owned and non-owned and hired vehicles, trailers or semi-trailers designed for travel on public roads, with a minimum, combined single limit of Five Million Dollars (\$5,000,000) per occurrence for bodily injury, including death, and property damage.

18.3.4 Excess Public Liability Insurance over and above the Employers' Liability Commercial General Liability and Comprehensive Automobile Liability Insurance coverage, with a minimum combined single limit of Twenty Million Dollars (\$20,000,000) per occurrence/Twenty Million Dollars (\$20,000,000) aggregate.

18.3.5 The Commercial General Liability Insurance, Comprehensive Automobile Insurance and Excess Public Liability Insurance policies of RG&E and Connecting Transmission Owner shall name the other Party, its parent, associated and Affiliate companies and their respective directors, officers, agents, servants and employees ("Other Party Group") as additional insured. All policies shall contain provisions whereby the insurers waive all rights of subrogation in accordance with the provisions of this Agreement against the Other Party Group and provide thirty (30) Calendar days advance written notice to the Other Party Group prior to anniversary date of cancellation or any material change in coverage or condition.

18.3.6 The Commercial General Liability Insurance, Comprehensive Automobile Liability Insurance and Excess Public Liability Insurance policies shall contain provisions that specify that the policies are primary and shall apply to such extent without consideration for other policies separately carried and shall state that each insured is provided coverage as though a separate policy had been issued to each, except the insurer's liability shall not be increased beyond the amount for which the insurer would have been liable had only one insured been covered. RG&E and Connecting Transmission Owner shall each be responsible for its respective deductibles or retentions.

18.3.7 The Commercial General Liability Insurance, Comprehensive Automobile Liability Insurance and Excess Public Liability Insurance policies, if written on a Claims First Made Basis, shall be maintained in full force and effect for two (2) years after termination of this Agreement, which coverage may be in the form of tail coverage or extended reporting period coverage if agreed by RG&E and Connecting Transmission Owner.

18.3.8 The requirements contained herein as to the types and limits of all insurance to be maintained by RG&E and Connecting Transmission Owner are not intended to and shall not in any manner, limit or qualify the liabilities and obligations assumed by those Parties under this Agreement.

18.3.9 Within ten (10) days following execution of this Agreement, and as soon as practicable after the end of each fiscal year or at the renewal of the insurance policy and in any event within ninety (90) days thereafter, RG&E and Connecting Transmission Owner shall provide certification of all insurance required in this Agreement, executed by each insurer or by an authorized representative of each insurer.

18.3.10 Notwithstanding the foregoing, RG&E and Connecting Transmission Owner may each self-insure to meet the minimum insurance requirements of Articles 18.3.2 through 18.3.8 to the extent it maintains a self-insurance program; provided that, such Party's senior debt is rated at investment grade, or better, by Standard & Poor's and that its self-insurance program meets the minimum insurance requirements of Articles 18.3.2 through 18.3.8. For any period of time that a Party's senior debt is unrated by Standard & Poor's or is rated at less than investment grade by Standard & Poor's, such Party shall comply with the insurance requirements applicable to it under Articles 18.3.2 through 18.3.9. In the event that a Party is permitted to self-insure pursuant to this Article 18.3.10, it shall notify the other Party that it meets the requirements to self-insure and that its self-insurance program meets the minimum insurance requirements in a manner consistent with that specified in Article 18.3.9.

18.3.11 RG&E and Connecting Transmission Owner agree to report to each other in writing as soon as practical all accidents or occurrences resulting in injuries to any person, including death, and any property damage arising out of this Agreement.

ARTICLE 19. ASSIGNMENT

19.1 Assignment.

This Agreement may be assigned by a Party only with the written consent of the other Party; provided that a Party may assign this Agreement without the consent of the other Party to any Affiliate of the assigning Party with an equal or greater credit rating and with the legal authority and operational ability to satisfy the obligations of the assigning Party under this Agreement; provided further that a Party may assign this Agreement without the consent of the other Party in connection with the sale, merger, restructuring, or transfer of a substantial portion or all of its assets, including the Attachment Facilities it owns, so long as the assignee in such a transaction directly assumes in writing all rights, duties and obligations arising under this

Agreement; and provided further that RG&E shall have the right to assign this Agreement, without the consent of Connecting Transmission Owner, for collateral security purposes to aid in providing financing for the Transmission Facility, provided that RG&E will promptly notify Connecting Transmission Owner of any such assignment. Any financing arrangement entered into by RG&E pursuant to this Article will provide that prior to or upon the exercise of the secured party's, trustee's or mortgagee's assignment rights pursuant to said arrangement, the secured creditor, the trustee or mortgagee will notify Connecting Transmission Owner of the date and particulars of any such exercise of assignment right(s) and will provide Connecting Transmission Owner with proof that it meets the requirements of Articles 11.5 and 18.3. Any attempted assignment that violates this Article is void and ineffective. Any assignment under this Agreement shall not relieve a Party of its obligations, nor shall a Party's obligations be enlarged, in whole or in part, by reason thereof. Where required, consent to assignment will not be unreasonably withheld, conditioned or delayed.

ARTICLE 20. SEVERABILITY

20.1 Severability.

If any provision in this Agreement is finally determined to be invalid, void or unenforceable by any court or other Governmental Authority having jurisdiction, such determination shall not invalidate, void or make unenforceable any other provision, agreement or covenant of this Agreement.

ARTICLE 21. COMPARABILITY

21.1 Comparability.

The Parties will comply with all applicable comparability and code of conduct laws, rules and regulations, as amended from time to time.

ARTICLE 22. CONFIDENTIALITY

22.1 Confidentiality.

Certain information exchanged by the Parties during the term of this Agreement shall constitute confidential information ("Confidential Information") and shall be subject to this Article 22.

If requested by a Party receiving information, the Party supplying the information shall provide in writing, the basis for asserting that the information referred to in this Article warrants confidential treatment, and the requesting Party may disclose such writing to the appropriate Governmental Authority. Each Party shall be responsible for the costs associated with affording confidential treatment to its information.

22.1.1 Term.

During the term of this Agreement, and for a period of three (3) years after the expiration or termination of this Agreement, except as otherwise provided in this Article 22, each Party shall hold in confidence and shall not disclose to any person Confidential Information.

22.1.2 Confidential Information.

The following shall constitute Confidential Information any non-public information that is treated as confidential by the disclosing Party and which the disclosing Party identifies as Confidential Information in writing at the time, or promptly after the time, of disclosure.

22.1.3 Scope.

Confidential Information shall not include information that the receiving Party can demonstrate: (1) is generally available to the public other than as a result of a disclosure by the receiving Party; (2) was in the lawful possession of the receiving Party on a non-confidential basis before receiving it from the disclosing Party; (3) was supplied to the receiving Party without restriction by a third party, who, to the knowledge of the receiving Party after due inquiry, was under no obligation to the disclosing Party to keep such information confidential; (4) was independently developed by the receiving Party without reference to Confidential Information of the disclosing Party; or (5) is, or becomes, publicly known, through no wrongful act or omission of the receiving Party or Breach of this Agreement; or (6) is required, in accordance with Article 22.1.8 of this Agreement, Order of Disclosure, to be disclosed by any Governmental Authority or is otherwise required by law or subpoena, or is necessary in any legal proceeding establishing rights and obligations under this Agreement. Information designated as Confidential Information will no longer be deemed confidential if the Party that designated the information as confidential notifies the other Party that it no longer is confidential.

22.1.4 Release of Confidential Information.

No Party shall release or disclose Confidential Information to any other person, except to its Affiliates (limited by FERC Standards of Conduct requirements), subcontractors, employees, consultants, or to parties who may be considering providing financing to or equity participation with RG&E, or to potential purchasers or assignees of a Party, on a need-to-know basis in connection with this Agreement, unless such person has first been advised of the confidentiality provisions of this Article 22 and has agreed to comply with such provisions. Notwithstanding the foregoing, a Party providing Confidential Information to any person shall remain primarily responsible for any release of Confidential Information in contravention of this Article 22.

22.1.5 Rights.

Each Party retains all rights, title, and interest in the Confidential Information that each Party discloses to the other Party. The disclosure by each Party to the other Parties of Confidential Information shall not be deemed a waiver by any Party or any other person or entity of the right to protect the Confidential Information from public disclosure.

22.1.6 No Warranties.

By providing Confidential Information, no Party makes any warranties or representations as to its accuracy or completeness. In addition, by supplying Confidential Information, no Party obligates itself to provide any particular information or Confidential Information to the other Parties nor to enter into any further agreements or proceed with any other relationship or joint venture.

22.1.7 Standard of Care.

Each Party shall use at least the same standard of care to protect Confidential Information it receives as it uses to protect its own Confidential Information from unauthorized disclosure, publication or dissemination. Each Party may use Confidential Information solely to fulfill its obligations to the other Party under this Agreement or its regulatory requirements; including the NYISO OATT and NYISO Service Tariff.

22.1.8 Order of Disclosure.

If a court or a Government Authority or entity with the right, power, and apparent authority to do so requests or requires any Party, by subpoena, oral deposition, interrogatories, requests for production of documents, administrative order, or otherwise (including compliance with applicable provisions of the New York Public Officers Law), to disclose Confidential Information, that Party shall provide the other Parties with prompt notice of such request(s) or requirement(s) so that the other Parties may seek an appropriate protective order or waive compliance with the terms of this Agreement. Notwithstanding the absence of a protective order or waiver, the Party may disclose such Confidential Information which, in the opinion of its counsel, the Party is legally compelled to disclose. Each Party will use Reasonable Efforts to obtain reliable assurance that confidential treatment will be accorded any Confidential Information so furnished.

22.1.9 Termination of Agreement.

Upon termination of this Agreement for any reason, each Party shall, within ten (10) Calendar Days of receipt of a written request from the other Parties, use Reasonable Efforts to destroy, erase, or delete (with such destruction, erasure, and deletion certified in writing to the other Parties) or return to the other Parties, without retaining copies thereof, any and all written or electronic Confidential Information received from the other Parties pursuant to this Agreement.

22.1.10 Remedies.

The Parties agree that monetary damages would be inadequate to compensate a Party for another Party's Breach of its obligations under this Article 22. Each Party accordingly agrees that the other Parties shall be entitled to equitable relief, by way of injunction or otherwise, if the first Party Breaches or threatens to Breach its obligations under this Article 22, which equitable relief shall be granted without bond or proof of damages, and the receiving Party shall not plead in defense that there would be an adequate remedy at law. Such remedy shall not be deemed an

exclusive remedy for the Breach of this Article 22, but shall be in addition to all other remedies available at law or in equity. The Parties further acknowledge and agree that the covenants contained herein are necessary for the protection of legitimate business interests and are reasonable in scope. No Party, however, shall be liable for indirect, incidental, or consequential or punitive damages of any nature or kind resulting from or arising in connection with this Article 22.

22.1.11 Disclosure to FERC, its Staff, or a State.

Notwithstanding anything in this Article 22 to the contrary, and pursuant to 18 C.F.R. section 1b.20, if FERC or its staff, during the course of an investigation or otherwise, requests information from one of the Parties that is otherwise required to be maintained in confidence pursuant to this Agreement, the Party shall provide the requested information to FERC or its staff, within the time provided for in the request for information. In providing the information to FERC or its staff, the Party must, consistent with 18 C.F.R. section 388.112, request that the information be treated as confidential and non-public by FERC and its staff and that the information be withheld from public disclosure. Parties are prohibited from notifying the other Parties to this Agreement prior to the release of the Confidential Information to the Commission or its staff. The Party shall notify the other Parties to the Agreement when it is notified by FERC or its staff that a request to release Confidential Information has been received by FERC, at which time the Parties may respond before such information would be made public, pursuant to 18 C.F.R. section 388.112. Requests from a state regulatory body conducting a confidential investigation shall be treated in a similar manner if consistent with the applicable state rules and regulations. A Party shall not be liable for any losses, consequential or otherwise, resulting from that Party divulging Confidential Information pursuant to a FERC or state regulatory body request under this paragraph.

22.1.12 Required Notices Upon Requests or Demands for Confidential Information.

Except as otherwise expressly provided herein, no Party shall disclose Confidential Information to any person not employed or retained by the Party possessing the Confidential Information, except to the extent disclosure is: (i) required by law; (ii) reasonably deemed by the disclosing Party to be required to be disclosed in connection with a dispute between or among the Parties, or the defense of litigation or dispute; (iii) otherwise permitted by consent of the other Party, such consent not to be unreasonably withheld; or (iv) necessary to fulfill its obligations under this Agreement. Prior to any disclosures of a Party's Confidential Information under this subparagraph, or if any third party or Governmental Authority makes any request or demand for any of the information described in this subparagraph, the disclosing Party agrees to promptly notify the other Party in writing and agrees to assert confidentiality and cooperate with the other Party in seeking to protect the Confidential Information from public disclosure by confidentiality agreement, protective order or other reasonable measures.

ARTICLE 23. ENVIRONMENTAL RELEASES

23.1 RG&E and Connecting Transmission Owner Notice.

Subject to reporting requirements that may be imposed on RG&E and Connecting Transmission Owner under Applicable Laws and Regulations, RG&E and Connecting Transmission Owner shall each notify the other Party, first orally and then in writing, of the release of any Hazardous Substances, any asbestos or lead abatement activities, or any type of remediation activities related to the Transmission Facility or the Attachment Facilities, each of which may reasonably be expected to affect the other Party. Subject to reporting requirements that may be imposed on RG&E and Connecting Transmission Owner under Applicable Laws and Regulations, the notifying Party shall: (i) provide the notice as soon as practicable, provided such Party makes a good faith effort to provide the notice no later than twenty-four hours after such Party becomes aware of the occurrence; and (ii) promptly furnish to the other Party copies of any publicly available reports filed with any Governmental Authorities addressing such events.

ARTICLE 24. INFORMATION REQUIREMENT

24.1 Information Acquisition.

Connecting Transmission Owner and RG&E shall each submit specific information regarding the electrical characteristics of their respective facilities to the other as described below and in accordance with Applicable Reliability Standards.

24.2 Information Submission by Connecting Transmission Owner.

The initial information submission by Connecting Transmission Owner shall occur no later than one hundred eighty (180) Calendar Days prior to Trial Operation and shall include New York State Transmission System information necessary to allow RG&E to select equipment and meet any system protection and stability requirements, unless otherwise mutually agreed to by RG&E and Connecting Transmission Owner.

24.3 Updated Information Submission by RG&E.

The updated information submission by RG&E, including manufacturer information, shall occur no later than one hundred eighty (180) Calendar Days prior to the Trial Operation. RG&E shall submit a completed copy of the Transmission Facility data requirements. Information in this submission shall be the most current Transmission Facility design. Information submitted for stability models shall be compatible with applicable NYISO standard models. If there is no compatible model, RG&E will work with a consultant mutually agreed to by the Parties to develop and supply a standard model and associated information.

If RG&E's data is different from what was originally provided to Connecting Transmission Owner pursuant to an interconnection study undertaken in accordance with this Agreement, and that difference may be reasonably expected to affect the Connecting

Transmission Owner's facilities or the New York State Transmission System, as determined by the Connecting Transmission Owner in consultation with the NYISO, then the Parties will conduct the appropriate studies, in coordination with NYISO if required, to determine the impact on the New York State Transmission System based on actual data submitted pursuant to this Article 24.3. Such studies will provide an estimate of any additional modifications to the New York State Transmission System, Connecting Transmission Owner's Attachment Facilities or Network Upgrade Facilities based on the actual data and a good faith estimate of the costs thereof. RG&E shall not begin Trial Operation until such studies are completed. RG&E shall be responsible for the cost of any modifications required by the actual data, including the cost of any required studies.

24.4 Information Supplementation.

Prior to the Commercial Operation Date, RG&E and Connecting Transmission Owner shall supplement their information submissions described above in this Article 24 with any and all "as-built" Transmission Facility information or "as-tested" performance information that differs from the initial submissions or, alternatively, written confirmation that no such differences exist. RG&E shall conduct tests on the Transmission Facility as required by Good Utility Practice.

Subsequent to the Commercial Operation Date, RG&E shall provide the Connecting Transmission Owner and the NYISO any information changes due to equipment replacement, repair, or adjustment. Connecting Transmission Owner shall provide the RG&E and the NYISO any information changes due to equipment replacement, repair or adjustment in the directly connected substation or any adjacent Connecting Transmission Owner substation that may affect RG&E Attachment Facilities equipment ratings, protection or operating requirements. RG&E and Connecting Transmission Owner shall provide such information no later than thirty (30) Calendar Days after the date of the equipment replacement, repair or adjustment.

ARTICLE 25. INFORMATION ACCESS AND AUDIT RIGHTS

25.1 Information Access.

Each Party ("Disclosing Party") shall make available to the other Party ("Requesting Party") information that is in the possession of the Disclosing Party and is necessary in order for the Requesting Party to: (i) verify the costs incurred by the Disclosing Party for which the Requesting Party is responsible under this Agreement; and (ii) carry out its obligations and responsibilities under this Agreement. The Parties shall not use such information for purposes other than those set forth in this Article 25.1 of this Agreement and to enforce their rights under this Agreement.

25.2 Reporting of Non-Force Majeure Events.

Each Party (the "Notifying Party") shall notify the other Party when the Notifying Party becomes aware of its inability to comply with the provisions of this Agreement for a reason other than a Force Majeure event (notice of which shall be governed by Section 16.1). The Parties

agree to cooperate with each other and provide necessary information regarding such inability to comply, including the date, duration, reason for the inability to comply, and corrective actions taken or planned to be taken with respect to such inability to comply. Notwithstanding the foregoing, notification, cooperation or information provided under this Article shall not entitle the Party receiving such notification to allege a cause for anticipatory breach of this Agreement.

25.3 Audit Rights.

Subject to the requirements of confidentiality under Article 22 of this Agreement, each Party shall have the right, during normal business hours, and upon prior reasonable notice to the other Party, to audit at its own expense the other Party's accounts and records pertaining to the other Party's performance or satisfaction of its obligations under this Agreement. Such audit rights shall include audits of the other Party's costs, calculation of invoiced amounts, and each Party's actions in an Emergency State. Any audit authorized by this Article shall be performed at the offices where such accounts and records are maintained and shall be limited to those portions of such accounts and records that relate to the Party's performance and satisfaction of obligations under this Agreement. Each Party shall keep such accounts and records for a period equivalent to the audit rights periods described in Article 25.4 of this Agreement.

25.4 Audit Rights Periods.

25.4.1 Audit Rights Period for Construction-Related Accounts and Records.

Accounts and records related to the design, engineering, procurement, and construction of Connecting Transmission Owner Attachment Facilities and Network Upgrade Facilities shall be subject to audit for a period of twenty-four months following Connecting Transmission Owner's issuance of a final invoice in accordance with Article 12.2 of this Agreement.

25.4.2 Audit Rights Period for All Other Accounts and Records.

Accounts and records related to a Party's performance or satisfaction of its obligations under this Agreement other than those described in Article 25.4.1 of this Agreement shall be subject to audit as follows: (i) for an audit relating to cost obligations, the applicable audit rights period shall be twenty-four months after the auditing Party's receipt of an invoice giving rise to such cost obligations; and (ii) for an audit relating to all other obligations, the applicable audit rights period shall be twenty-four months after the event for which the audit is sought.

25.5 Audit Results.

If an audit by a Party determines that an overpayment or an underpayment has occurred, a notice of such overpayment or underpayment shall be given to the other Party together with those records from the audit which support such determination.

ARTICLE 26. SUBCONTRACTORS

26.1 General.

Nothing in this Agreement shall prevent a Party from utilizing the services of any subcontractor as it deems appropriate to perform its obligations under this Agreement; provided, however, that each Party shall require its subcontractors to comply with all applicable terms and conditions of this Agreement in providing such services and each Party shall remain primarily liable to the other Party for the performance of such subcontractor.

26.2 Responsibility of Principal.

The creation of any subcontract relationship shall not relieve the hiring Party of any of its obligations under this Agreement. The hiring Party shall be fully responsible to the other Party for the acts or omissions of any subcontractor the hiring Party hires as if no subcontract had been made; provided, however, that in no event shall Connecting Transmission Owner be liable for the actions or inactions of RG&E or its subcontractors with respect to obligations of RG&E under Article 5 of this Agreement. Any applicable obligation imposed by this Agreement upon the hiring Party shall be equally binding upon, and shall be construed as having application to, any subcontractor of such Party.

26.3 No Limitation by Insurance.

The obligations under this Article 26 will not be limited in any way by any limitation of subcontractor's insurance.

ARTICLE 27. DISPUTES

27.1 Submission.

In the event any Party has a dispute, or asserts a claim, that arises out of or in connection with this Agreement or its performance (a "Dispute"), such Party shall provide the other Party with written notice of the Dispute ("Notice of Dispute"). Such Dispute shall be referred to a designated senior representative of each Party for resolution on an informal basis as promptly as practicable after receipt of the Notice of Dispute by the other Party. In the event the designated representatives are unable to resolve the Dispute through unassisted or assisted negotiations within thirty (30) Calendar Days of the other Party's receipt of the Notice of Dispute, such Dispute may, upon mutual agreement of the Parties, be submitted to arbitration and resolved in accordance with the arbitration procedures set forth below. In the event the Parties do not agree to submit such Dispute to arbitration, each Party may exercise whatever rights and remedies it may have in equity or at law consistent with the terms of this Agreement.

27.2 External Arbitration Procedures.

Any arbitration initiated under this Agreement shall be conducted before a single neutral arbitrator appointed by the Parties. If the Parties fail to agree upon a single arbitrator within ten

(10) Calendar Days of the submission of the Dispute to arbitration, each Party shall choose one arbitrator and those arbitrators shall select a third arbitrator to sit on a three-member arbitration panel. In each case, the arbitrator(s) shall be knowledgeable in electric utility matters, including electric transmission and bulk power issues, and shall not have any current or past substantial business or financial relationships with any party to the arbitration (except prior arbitration). The arbitrator(s) shall provide each of the Parties an opportunity to be heard and, except as otherwise provided herein, shall conduct the arbitration in accordance with the Commercial Arbitration Rules of the American Arbitration Association (“Arbitration Rules”) and any applicable FERC regulations or RTO rules; provided, however, in the event of a conflict between the Arbitration Rules and the terms of this Article 27, the terms of this Article 27 shall prevail.

27.3 Arbitration Decisions.

Unless otherwise agreed by the Parties, the arbitrator(s) shall render a decision within ninety (90) Calendar Days of appointment and shall notify the Parties in writing of such decision and the reasons therefor. The arbitrator(s) shall be authorized only to interpret and apply the provisions of this Agreement and shall have no power to modify or change any provision of this Agreement in any manner. The decision of the arbitrator(s) shall be final and binding upon the Parties, and judgment on the award may be entered in any court having jurisdiction. The decision of the arbitrator(s) may be appealed solely on the grounds that the conduct of the arbitrator(s), or the decision itself, violated the standards set forth in the Federal Arbitration Act or the Administrative Dispute Resolution Act. The final decision of the arbitrator must also be filed with FERC if it affects jurisdictional rates, terms and conditions of service, Attachment Facilities, or Network Upgrade Facilities.

27.4 Costs.

Each Party shall be responsible for its own costs incurred during the arbitration process and for the following costs, if applicable: (1) one-half of the cost of the single arbitrator jointly chosen by the Parties; or (2) the cost of the arbitrator chosen by a Party to sit on the three-member arbitration panel; and (3) one-half the cost of the third arbitrator chosen by the chosen by the other two arbitrators.

27.5 Termination.

Notwithstanding the provisions of this Article 27, any Party may terminate this Agreement in accordance with its provisions or pursuant to an action at law or equity. The issue of whether such a termination is proper shall not be considered a Dispute hereunder.

ARTICLE 28. REPRESENTATIONS, WARRANTIES AND COVENANTS

28.1 General.

Each Party makes the following representations, warranties and covenants:

28.1.1 Good Standing.

Such Party is duly organized, validly existing and in good standing under the laws of the state in which it is organized, formed, or incorporated, as applicable; that it is qualified to do business in the state or states in which the Transmission Facility, Attachment Facilities and Network Upgrade Facilities, owned by such Party, as applicable, are located; and that it has the corporate power and authority to own its properties, to carry on its business as now being conducted and to enter into this Agreement and carry out the transactions contemplated hereby and perform and carry out all covenants and obligations on its part to be performed under and pursuant to this Agreement.

28.1.2 Authority.

Such Party has the right, power and authority to enter into this Agreement, to become a Party hereto and to perform its obligations hereunder. This Agreement is a legal, valid and binding obligation of such Party, enforceable against such Party in accordance with its terms, except as the enforceability thereof may be limited by applicable bankruptcy, insolvency, reorganization or other similar laws affecting creditors' rights generally and by general equitable principles (regardless of whether enforceability is sought in a proceeding in equity or at law).

28.1.3 No Conflict.

The execution, delivery and performance of this Agreement does not violate or conflict with the organizational or formation documents, or bylaws or operating agreement, of such Party, or any judgment, license, permit, order, material agreement or instrument applicable to or binding upon such Party or any of its assets.

28.1.4 Consent and Approval.

Such Party has sought or obtained, or, in accordance with this Agreement will seek or obtain, each consent, approval, authorization, order, or acceptance by any Governmental Authority in connection with the execution, delivery and performance of this Agreement, and it will provide to any Governmental Authority notice of any actions under this Agreement that are required by Applicable Laws and Regulations.

ARTICLE 29. MISCELLANEOUS

29.1 Binding Effect.

This Agreement and the rights and obligations hereof, shall be binding upon and shall inure to the benefit of the successors and permitted assigns of the Parties hereto.

29.2 Conflicts.

If there is a discrepancy or conflict between or among the terms and conditions of this cover agreement and the Appendices hereto, the terms and conditions of this cover agreement

shall be given precedence over the Appendices, except as otherwise expressly agreed to in writing by the Parties. **Please note that the Appendices to this Agreement may contain management, design, interconnection, and operational procedures and criteria that are unique to the Connecting Transmission Owner or RG&E, or both. In the event of a conflict between the terms and conditions of an appendix and the remaining provisions of this Agreement, the appendix shall control**

29.3 Rules of Interpretation.

This Agreement, unless a clear contrary intention appears, shall be construed and interpreted as follows: (1) the singular number includes the plural number and vice versa; (2) reference to any person includes such person's successors and assigns but, in the case of a Party, only if such successors and assigns are permitted by this Agreement, and reference to a person in a particular capacity excludes such person in any other capacity or individually; (3) reference to any agreement (including this Agreement), document, instrument or tariff means such agreement, document, instrument, or tariff as amended or modified and in effect from time to time in accordance with the terms thereof and, if applicable, the terms hereof; (4) reference to any Applicable Laws and Regulations means such Applicable Laws and Regulations as amended, modified, codified, or reenacted, in whole or in part, and in effect from time to time, including, if applicable, rules and regulations promulgated thereunder; (5) unless expressly stated otherwise, reference to any Article, Section or Appendix means such Article of this Agreement or such Appendix to this Agreement, as the case may be; (6) "hereunder", "hereof", "herein", "hereto" and words of similar import shall be deemed references to this Agreement as a whole and not to any particular Article or other provision hereof or thereof; (7) "including" (and with correlative meaning "include") means including without limiting the generality of any description preceding such term; and (8) relative to the determination of any period of time, "from" means "from and including", "to" means "to but excluding" and "through" means "through and including".

29.4 Compliance.

Each Party shall perform its obligations under this Agreement in accordance with Applicable Laws and Regulations, Applicable Reliability Standards, and Good Utility Practice. To the extent a Party is required or prevented or limited in taking any action by such regulations and standards, such Party shall not be deemed to be in Breach of this Agreement for its compliance therewith. When any Party becomes aware of such a situation, it shall notify the other Parties promptly so that the Parties can discuss the amendment to this Agreement that is appropriate under the circumstances.

29.5 Joint and Several Obligations.

Except as otherwise stated herein, the obligations of RG&E and Connecting Transmission Owner are several, and are neither joint nor joint and several.

29.6 Entire Agreement.

This Agreement, including all Appendices and Schedules attached hereto, constitutes the entire agreement between the Parties with reference to the subject matter hereof, and supersedes all prior and contemporaneous understandings or agreements, oral or written, between the Parties with respect to the subject matter of this Agreement. Except as provided in Article 2.1, there are no other agreements, representations, warranties, or covenants which constitute any part of the consideration for, or any condition to, either Party's compliance with its obligations under this Agreement.

29.7 No Third Party Beneficiaries.

This Agreement is not intended to and does not create rights, remedies, or benefits of any character whatsoever in favor of any persons, corporations, associations, or entities other than the Parties, and the obligations herein assumed are solely for the use and benefit of the Parties, their successors in interest and permitted their assigns.

29.8 Waiver.

The failure of a Party to this Agreement to insist, on any occasion, upon strict performance of any provision of this Agreement will not be considered a waiver of any obligation, right, or duty of, or imposed upon, such Party. Any waiver at any time by either Party of its rights with respect to this Agreement shall not be deemed a continuing waiver or a waiver with respect to any other failure to comply with any other obligation, right, duty of this Agreement. Any waiver of this Agreement shall, if requested, be provided in writing.

29.9 Headings.

The descriptive headings of the various Articles of this Agreement have been inserted for convenience of reference only and are of no significance in the interpretation or construction of this Agreement.

29.10 Multiple Counterparts.

This Agreement may be executed in two or more counterparts, each of which is deemed an original but all constitute one and the same instrument.

29.11 Amendment.

The Parties may by mutual agreement amend this Agreement, by a written instrument duly executed by all the Parties.

29.12 Modification by the Parties.

The Parties may by mutual agreement amend the Appendices to this Agreement, by a written instrument duly executed by the Parties. Such an amendment shall become effective and a part of this Agreement upon satisfaction of all Applicable Laws and Regulations.

29.13 Reservation of Rights.

Connecting Transmission Owner and RG&E each shall have the right to make unilateral filings with FERC to modify this Agreement with respect to any rates, terms and conditions, charges, classifications of service, rule or regulation under section 205 or any other applicable provision of the Federal Power Act and FERC's rules and regulations thereunder; provided that each Party shall have the right to protest any such filing by the other Party and to participate fully in any proceeding before FERC in which such modifications may be considered. Nothing in this Agreement shall limit the rights of the Parties or of FERC under sections 205 or 206 of the Federal Power Act and FERC's rules and regulations thereunder, except to the extent that the Parties otherwise mutually agree as provided herein.

29.14 No Partnership.

This Agreement shall not be interpreted or construed to create an association, joint venture, agency relationship, or partnership among the Parties or to impose any partnership obligation or partnership liability upon any Party. No Party shall have any right, power or authority to enter into any agreement or undertaking for, or act on behalf of, or to act as or be an agent or representative of, or to otherwise bind, any other Party.

29.15 Other Transmission Rights.

Notwithstanding any other provision of this Agreement, nothing herein shall be construed as relinquishing or foreclosing any rights, including but not limited to firm transmission rights, capacity rights, or transmission congestion rights that RG&E shall be entitled to, now or in the future under any other agreement or tariff as a result of, or otherwise associated with, the transmission capacity, if any, created by the Network Upgrade Facilities.

IN WITNESS WHEREOF, the Parties have executed this Agreement in duplicate originals, each of which shall constitute and be an original effective Agreement between the Parties.

Rochester Gas and Electric
Corporation

New York Power Authority

By: Carl Taylor

By: Philip Tota

Carl Taylor

Philip Tota

Title: President & CEO

Title: SRP POWER SUPPLY

President and Chief Executive Officer

Senior VP - Power Supply

Date: 8/12/19

Date: 08/06/2019

By: Joe Syta

Joe Syta

Title: VP, Controller & Treasurer

NY VP, Controller & Treasurer

Date: 8/8/19

APPENDICES (for contract)

[Please note that the Appendices to this Agreement may contain management, design, interconnection, and operational procedures and criteria that are unique to the Connecting Transmission Owner or RG&E, or both. In the event of a conflict between the terms and conditions of an appendix and the remaining provisions of this Agreement, the appendix shall control]

APPENDIX A – ATTACHMENT FACILITIES, NETWORK UPGRADE FACILITIES AND TRANSMISSION FACILITY

MILEWOOD ROAD ACCESS ROAD

Milewood Road is an existing private road that runs between Tax ID Numbers 174.03-1-2 and 174.03-1-24 in the Town of Chili. RG&E will responsible for construction, maintenance and repair of Milewood Road and the Milewood Road access portion.

ACCESS ROAD THRU PROPERTY PREVIOUSLY OWNED BY JAYNES RIVERVIEW LLC

This access road runs thru the property previously owned by Jaynes Riverview, LLC, Tax ID Number 174.03-2-1.21, now owned by RG&E. This access road shall be maintained and repaired by RG&E.

A.1 ATTACHMENT FACILITIES:

1. RG&E Attachment Facilities

RG&E Attachment Facilities are described as the facilities and equipment located between the Transmission Facility and the Points of Change of Ownership. This shall include but isn't limited to all associated 345 kV bus structures, conduit & cable required which comprise the four terminal structures within Station 255.

2. Connecting Transmission Owner Attachment Facilities

Connecting Transmission Owner Facilities are described as the facilities between the Point of Change of Ownership and the Point of Interconnection. The new Station 255 will be supplied by breaking the two existing NYPA 345kV transmission lines (SR1-39 and NR-2) and connecting them to the new substation. The Point of Interconnection will be located between SR1-39 structures NR1-70-1 and NR1-69-4 and line NR-2 structures NR2-70-1 and NR2-69-4. The Point of Change of Ownership will be located at the insulator string connections at the four terminal structures located within Station 255. Reference Appendix VI for One-Line Diagram.

Pursuant to Article 5.1.2 of this Interconnection Agreement, RG&E has chosen the option to build the Connecting Owner’s Attachment Facilities. RG&E will design and construct the Connecting Owner’s Attachment Facilities in accordance with NYPA design criteria, including applicable NERC Reliability Standards and NPCC Directories (including those NERC Standards and Directories in effect or approved at the time of construction and that will be applicable to Connecting Owner’s Attachment Facilities once they are placed in service).

a. Connecting Transmission Owner Attachment Facility Cost Estimate

The total estimated cost for the installation of the new and removal of the existing transmission facilities to make the inter-connection is \$8,332,323 in 2018 USD. For the detailed estimate see Appendix A.IV.

A.2 NETWORK UPGRADE FACILITIES:

1. RG&E Network Upgrade Facilities:

1.1 Station 80 – SP&C Upgrades

The purpose of this scope of work is to make the necessary additions to Station 80 as a part of the Rochester Area Reliability Project.

1.2 Line HR-1 (Station 255 to Station 80)– SP&C Upgrades

“Appendix A.2.1.1.2 of this Interconnection Agreement Contains Critical Energy Infrastructure Information -- Do Not Distribute to Unauthorized Individuals”

[REDACTED]

[REDACTED]

1.3 Line HR-2 (Station 255 to Station 80) – SP&C Upgrades

Appendix A.2.1.1.3 of this Interconnection Agreement Contains Critical Energy Infrastructure Information -- Do Not Distribute to Unauthorized Individuals”

[REDACTED]

[REDACTED]

1.4 Line 40 – SP&C Upgrades

Appendix A.2.1.1.4 of this Interconnection Agreement Contains Critical Energy Infrastructure Information -- Do Not Distribute to Unauthorized Individuals”

[REDACTED]

[REDACTED]

1.5 Kintigh (NYSEG) - SP&C Upgrades

The scope of work is updates to the protection and control of existing line “SR1-39,” which currently connects NYSEG’s Kintigh substation (Somerset) to Station 80. This line will now connect Kintigh to the new Station 255, and be renamed to “SH1-39.”

a. Protection and Communication Requirements

“Appendix A.2.1.1.5.a of this Interconnection Agreement Contains Critical Energy Infrastructure Information -- Do Not Distribute to Unauthorized Individuals”

[REDACTED]



2. CONNECTING TRANSMISSION OWNER STAND ALONE NETWORK UPGRADE FACILITIES

1. Relocation of NYPA's 345kV Lines SR1-39 and NR-2

The project will require a relocation of NYPA's 345kV SR1-39 and NR-2 Lines. With the installation of Station 255 the line names of the existing lines between Niagara Station and Station 80 and Kintigh Station and Station 80 will be renamed as follows:

Line Name	Official Station Name	Mnemonic
NH-2	Niagara to Station 255	Niagara to Henrietta
HR-2	Station 255 to Station 80	Henrietta to Rochester
SH 1-39	Kintigh to Station 255	Somerset to Henrietta
HR-1	Station 255 to Station 80	Henrietta to Rochester

The structure types to be used for lines SH1-39 and NH-2 will include three-pole dead-end, H-frame & monopole structures indicated in Appendix A.I. Structures will be on average approximately 100 feet above ground, maintaining proper clearances to the ground. A reinforced concrete foundation will be used to support the steel poles. Depending on soils present,

The transfer of ownership to NYPA will be the insulator string connections at the four terminal structures located within Station 255.

Appendix A.2.2 of this Interconnection Agreement Contains Critical Energy Infrastructure Information -- Do Not Distribute to Unauthorized Individuals"

A series of horizontal black bars of varying lengths, some starting from the left edge and others indented, creating a rhythmic, abstract pattern. The bars are arranged in a sequence that suggests a timeline or a series of events, with some bars appearing as single strokes and others as part of a larger, more complex structure. The overall effect is one of dynamic movement and visual rhythm.

63

associated with each of the lattice towers will be removed completely. The removal, disposal and potential sale of any NYPA assets must be in compliance with NYPA's procedures and standards, including, but not limited to the New York State Public Authorities Law. Unless otherwise instructed by NYPA, RG&E shall, in coordination with NYPA, be responsible for the removal, disposal and sale of any NYPA assets. NYPA shall be paid the entire salvage value of any NYPA assets sold reduced only by the cost of removal for salvage. If costs of removal or disposal exceed the salvage value any and all removal or disposal costs shall be the responsibility of RG&E.

RG&E shall be responsible for restoration of the underlying real property to a condition suitable for agricultural use. Any soil or backfill imported for this purpose must meet the unrestricted use Soil Cleanup Objectives (6 NYCRR 375. Table 375-6.8). Imported soil should be organic in nature (top soil) to a grade suitable for agricultural use.

All excavated soil/drill cuttings will be inspected for odors and staining. If visual staining or odors are observed, the areas of suspected contamination will be screened for volatile organic compound vapors with a photoionization detector.

Impacted soils must be sampled, analyzed and disposed of at a NYPA approved facility. NYPA reserves the right to audit, inspect and perform its own testing to validate that the soil is suitable for recycling, ultimate end-use or disposition.

NYPA's Environmental, Health and Safety (EH&S) Division will confer with RG&E to establish, on a project/activity-specific basis, which 6 NYCRR 375 Soil Cleanup Objective Classification and/or NYSDEC CP-51 Supplemental Soil Cleanup Objectives parameters shall be applied to the proposed activity's imported "environmentally clean" soil and/or fill. This shall apply to any fill materials documented as coming from a source other than New York State Department of Transportation (NYSDOT) approved quarries and gravel/sand pits. RG&E shall document that fill materials originated from a NYSDOT approved quarry and/or gravel/sand pit.

For any fill materials being imported from a source other than NYSDOT approved quarries and gravel/sand pits, RG&E shall submit a certification letter, as defined by NYPA's EH&S on a project-specific basis, with supporting laboratory analysis demonstrating that the

materials are environmentally clean. If laboratory analysis is not available, then RG&E shall collect and analyze representative samples of the material proposed for use on Authority property, as specified in DEC's DER-10 Technical Guidance for Site Investigations and Remediation Table 5.4e(10) of fill/backfill proposed for use at the site and submit the laboratory results to the Project Sponsor and EH&S. Each sample shall be analyzed for the complete list of 6 NYCRR Part 375 and NYSDEC CP-51 Supplemental Soil Cleanup Objectives parameters to demonstrate that the soil complies with other requirements selected by EH&S and the Project Sponsor for environmentally clean soil/fill for the proposed activity.

The following existing lattice structures and all associated hardware will be removed by RG&E.

LINE NUMBER	STRUCTURE NUMBER
SR1-39	69-5
SR1-39	69-6
NR-2	69-5
NR-2	69-6

4. NIAGARA SUBSTATION

In order for line NH-2 to interface with the protection and communication scheme at Station 255, NYPA's Niagara Substation protection and communication systems need to be upgraded. The primary communication channel will be power line carrier which requires the addition of a wave trap and line CCVT. After equipment has been installed/upgraded by RGE, the transfer of ownership will include the wave trap, line CCVT, and protection and communication upgrades at the Niagara Substation. In addition to the power line carrier, NYPA will be installing OPGW, either before or after the power line carrier installation. The OPGW will ultimately be the primary communication channel once installed, but in the case where the power line carrier is installed prior to the OPGW, the power line carrier will need to be retired in place.

1. Site Development

No substation expansion is required.

2. Foundations

The foundations used will match the existing construction per drawings 8E-1100. Below is an estimate of the quantity needed for each foundation type.

- (3) 345kV CCVT/VT structure support foundation type “4F1”
- (1) 345kV Wave Trap structure support foundation type “4F1”
- Soil borings will be performed in the area where new foundations are required. Soil boring request needs to be coordinated between RG&E real estate and NYPA real estate to obtain a permit for the soil boring work. All NYPA requirements will be included in the permit. RG&E will include a drawing with the proposed locations in the permit application.

3. Grounding

- Niagara’s grounding grid study will be updated
- NYPA will provide existing grounding grid calculations
- NYPA will provide new short circuit conditions
- It is assumed that the copper taps can be made from the existing grid to the structures and equipment.

4. Conduit & Control Cable

- The existing conduit for the line CCVTs will be extended to the new CCVT location (to be confirmed during detailed engineering). Otherwise new conduit will be routed from new CCVT location to the NYPA Fan building.
- New control cable will be installed from the new CCVT location, run into the existing cable trench and into the lower level of the Fan Building and terminate in the termination cabinet.
- Shielded control cable is required in the 345kV yard.
- It is assumed that 2-2” Conduit and four cables are needed for “A” and “B” protection and AC for junction box heaters. Actual cable types, quantity and more accurate lengths will need to be determined during detailed engineering.

5. Major Equipment

- 345kV CCVT equipped with power line carrier

- (2) 345kV CCVTs without power line carrier.
- 345kV, 3000A Line Trap for phase B

6. Protection & Communication Requirements

NYPA, at the expense of RG&E, will perform installation of protection relay panels.

7. Structures

- Below is an estimate of the quantity of structures needed.
- (3) 345kV CCVT structures
- (1) 345kV Wave Trap structure
- Control House

The existing control house has adequate space for the replacement protection and communication equipment. No control house expansion is required.

Pursuant to Article 5.1.2 of this Interconnection Agreement, RG&E has chosen the option to build the Connecting Transmission Owner Stand Alone System Upgrade Facility. RG&E will design and construct the Connecting Transmission Owner Stand Alone System Upgrade Facility in accordance with NYPA design criteria, including applicable NERC Reliability Standards and NPCC Directories (including those NERC Standards and Directories in effect or approved at the time of construction and that will be applicable to Connecting Transmission Owner Stand Alone Network Upgrade Facilities once they are placed in service).

8. Connecting Transmission Owner Stand Alone System Upgrade Cost Estimate

The total estimated cost for the installation of the new and removal of the existing Connecting Transmission Owner Stand Alone System Upgrade Facility to make the interconnection is \$3,082,542 in 2018 USD. For the detailed estimate see Appendix A.V.

a. OPGW INSTALLATION ALTERNATE OPTION

NYPA has informed RGE of the potential of installing Optical Ground Wire (OPGW) onto NYPA's existing transmission circuits (Communications Backbone Program) including NR-2 (Niagara to Station 80). The OPGW will be installed at the top of the transmission circuit in place of the existing shield wire. OPGW has shielding around the fiber cables to help with lightning strikes (as shield wire would) and the fiber would aid NYPA with high-speed transmission of data. With the installation of OPGW, it would be a cleaner and more efficient approach than the use of the power line carrier system planned to be installed at Niagara. In the case the OPGW can be installed on NR-2 prior to the Niagara power line carrier construction, it would be utilized instead, and thus eliminate the need to have work completed for the installation of the power line carrier.

The cost of replacing/retiring the power line carrier with the OPGW will be addressed through a separate agreement.

A.3 TRANSMISSION FACILITY

The Transmission Facility is defined as the new 345kV-115kV substation known as RG&E Station 255 which is being constructed by RG&E as part of the Rochester Area Reliability Project ("RARP"). Station 255 will be located in the Town of Henrietta, County of Monroe between East River Road and the Genesee River. The Point of Interconnection is based on the submitted design for the RARP Segment III, as indicated on the Plan & Profile drawings in Appendix A.I.

1. Station 255/Henrietta (New Substation)

Station 255 will consist of a 345kV, 4 bay breaker and half arrangement with a total of five (5) 345kV transmission lines. Three (3) 345kV transmission lines to Station 80, NYPA's HR-1 and HR-2 and RG&E's Circuit 40. One (1) 345kV transmission line to NYSEG's Kintigh substation, NYPA's SH1-39. One (1) 345kV transmission line, NYPA's NH-2, to NYPA's Niagara substation, and two terminals for 345-115kV transformers. The 115kV portion of the substation will consist of a 2 bay breaker and a half arrangement with RG&E line 940 to Station 418, RG&E line 941 to Station 23 and two underground connections to the 345-115 kV

transformers. The Transmission Facility work at Station 255 shall include but is not limited to the design, procurement, construction, installation, and commissioning.

1. Site Development

The total project area within the fence line is approximately 12 acres, and is located in the Town of Henrietta, New York. The proposed substation yard is located approximately 1350 feet west of East River Road and 350 feet south of the existing NYPA transmission line. The yard is approximately 350 feet east of the Genesee River. The substation yard will be accessed by an approximately 1500 LF asphalt paved driveway from East River Road. The fenced substation yard is 1024' x 508' and is located in agricultural field with a wooded area covering the southeast corner of the yard.

- The lowest elevation of the yard is 556.0' (referenced to NAVD 1988) with a general 0.5% cross slope from east to west
- Asphalt pavement access driveway from East River Road
- Crushed stone yard and internal concrete access road
- Installation of new underground filter to meet NYSDEC storm water treatment requirements
- Installation of 2 oil/water secondary containment tanks with a combined storage capacity of a minimum of 130% of the largest volume of oil contained in a single transformer
- Installation of a closed storm drainage system including drainage manholes, catch basins, perforated and solid collection piping, and riprap outlet protection

a. Access Road to new RG&E Station 255

The conceptual location for the access road attempts to balance wetland impacts with the constraints presented by the existing NYPA lattice structures, the Empire State Pipeline, the topography and the right of-way boundaries.

Considering the proposed width of this access road and the constraints listed above, the final alignment and resulting wetland impacts are depicted in Appendix A.1.

2. Foundations

Foundations will be required for major equipment and for structures. It is anticipated that the foundations for the 345 and 115kV yards will be designed in accordance with IUSA/Avangrid TM2.71.00 115KV & Above Reinforced Concrete Foundation Standards. The 34.kV foundation design will follow IUSA/Avangrid TM2.61.00 69KV & Below Reinforced Concrete Foundation Standard. The transformer foundation will be designed with an oil containment system in accordance with Avangrid standard TM 2.71.17 Substation Oil Containment. The new control house foundation will be designed in accordance with IUSA/Avangrid TM2.71.08.

3. Grounding

- A complete Ground grid will be designed per IUSA/Avangrid TM2.71.77, IEEE80, & IEEE81
- New equipment and steel structures will be connected to the ground grid per IUSA/Avangrid Technical Manual TM 2.71.77.
- The ground grid will be designed with WinIGS during detailed engineering.
- The WINIGS design will be verified by direct measurement using WINSGM after construction of the ground grid

4. Conduit

- An “A” and “B” trench/cable system will be installed for the 345kV, 115kV, and 34.5kV systems in accordance with Avangrid standard TM 2.71.13 and requirements outlined by the NPCC.
- New “A” and “B” conduits from each breaker, motor-op switches, CCVTs and transformers will run into the “A” and “B” trench systems.
- Conduit fill calculations to be performed in accordance with NEC requirements

5. Major Equipment

- (2) 354/204Y- 118/68Y-34.5kV, 240/320/400//448 MVA (55//65 deg C) Auto-transformer connected Y-Y- Delta. Equipped with the following CTs
 - (1) 1200:2 on H2 345kV bushing

- (4) 2000:5MR on each 345kV bushing 1 - 3000:5 on X2 115kV bushing
- (4) 3000:5MR on each 115kV bushing 2 - 600:5MR on the neutral bushing
- (2) 2000:5MR on each 34.5kV bushing 2 - 2000:5MR on each 34.5kV Delta leg
- (11) 345kV, 3000A, 63kA Breakers, equipped w/ 2- 3000:5MR CTs per bushing 25 - 345kV, 4000A TPST, double-side break, motor-operated switches
- (5) 345kV 3000A, TPST, double-side break, motor-operated switches equipped w/ interlocked grounding switch
- (42) 345kV CCVTs (2 equipped with line tuner (LMU); 1 for the line SH1-39 to Kintigh and 1 for the line NH-2 to Niagara)
- (6) 345kV VTs for Metering (device used needs to be on the NY PSC approved list.) 6 - 345kV CTs for Metering (device used needs to be on the PSC approved list.) 21 - 345kV Station Class Surge Arresters- ratings: 276 kV /220kV MCOV
- (2) 345kV Line Trap for phase B on the line to Kintigh (SH1-39) and the line to Niagara NH-2)
- (6) 115kV, 3000A, 40kA Breakers, equipped w/ 2- 3000:5MR CTs per bushing 16 - 115kV, 3000A, vertical break Switches
- (24) 115kV CCVTs
- (24) 115kV Station Class Surge Arresters- ratings: 96 kV /76kV MCOV
- (2) 34.5kV, 1200A, 40kA Breakers, equipped w/ 2-1200:5MR CTs per bushing 4 - 34.5kV
- (4) 34.5 kV, 1200A center break, motor operated switches
- (18) 34.5kV Surge Arresters- ratings: 36 kV /29kV MCOV 2 - 34.5kV, 3ph Station Service Transformers (500 kVA)
- (6) 34.5 kV Voltage Transformers
- (2) 125 VDC, 800A-H Batteries , 200A chargers
- (2) SCADA Panels

- (1) Fiber Patch Panel 6 – Control Panels
- (14) Protection Panels
- (1) Revenue Metering Panel
- (6) Telecom Panels
- (1) Telecom Backboard
- (5) 125V DC Distribution Panels
- (1) 208/120V AC Power Switchboard
- (3) AC Wall mounted Distribution Boards
- (2) Fire Alarm Panels
- (1) Reserved IT Panel
- (2) Reserved Panel board

6. Protection and Communication Requirements

“Appendices A.3.6 of this Interconnection Agreement Contains Critical Energy Infrastructure Information -- Do Not Distribute to Unauthorized Individuals”

[REDACTED]

[REDACTED]

[REDACTED]

[REDACTED]

[REDACTED]

[REDACTED]

[REDACTED]	[REDACTED]	[REDACTED]
[REDACTED]	[REDACTED]	[REDACTED]
[REDACTED]	[REDACTED]	[REDACTED]

[REDACTED]

[REDACTED]	[REDACTED]	[REDACTED]
[REDACTED]	[REDACTED]	[REDACTED]
[REDACTED]	[REDACTED]	[REDACTED]

[REDACTED]

[REDACTED]

[REDACTED]	
[REDACTED]	[REDACTED]
[REDACTED]	[REDACTED]
[REDACTED]	[REDACTED]
[REDACTED]	[REDACTED]
[REDACTED]	[REDACTED]
[REDACTED]	[REDACTED]
[REDACTED]	[REDACTED]
[REDACTED]	[REDACTED]
[REDACTED]	[REDACTED]
[REDACTED]	[REDACTED]
[REDACTED]	[REDACTED]
[REDACTED]	[REDACTED]
[REDACTED]	[REDACTED]

[REDACTED]	
[REDACTED]	[REDACTED]
[REDACTED]	[REDACTED]
[REDACTED]	
[REDACTED]	[REDACTED]
[REDACTED]	
[REDACTED]	[REDACTED]
[REDACTED]	[REDACTED]
[REDACTED]	[REDACTED]
[REDACTED]	[REDACTED] [REDACTED]
[REDACTED]	[REDACTED] [REDACTED]

[REDACTED]

[REDACTED]	
[REDACTED]	[REDACTED]
[REDACTED]	[REDACTED]
[REDACTED]	
[REDACTED]	
[REDACTED]	
[REDACTED]	
[REDACTED]	[REDACTED]
[REDACTED]	
[REDACTED]	
[REDACTED]	
[REDACTED]	
[REDACTED]	[REDACTED] [REDACTED]
[REDACTED]	[REDACTED] [REDACTED]
[REDACTED]	[REDACTED]

[REDACTED]	
[REDACTED]	[REDACTED]
[REDACTED]	[REDACTED]
[REDACTED]	
[REDACTED]	[REDACTED]
[REDACTED]	
[REDACTED]	[REDACTED]
[REDACTED]	[REDACTED]
[REDACTED]	[REDACTED]
[REDACTED]	[REDACTED]

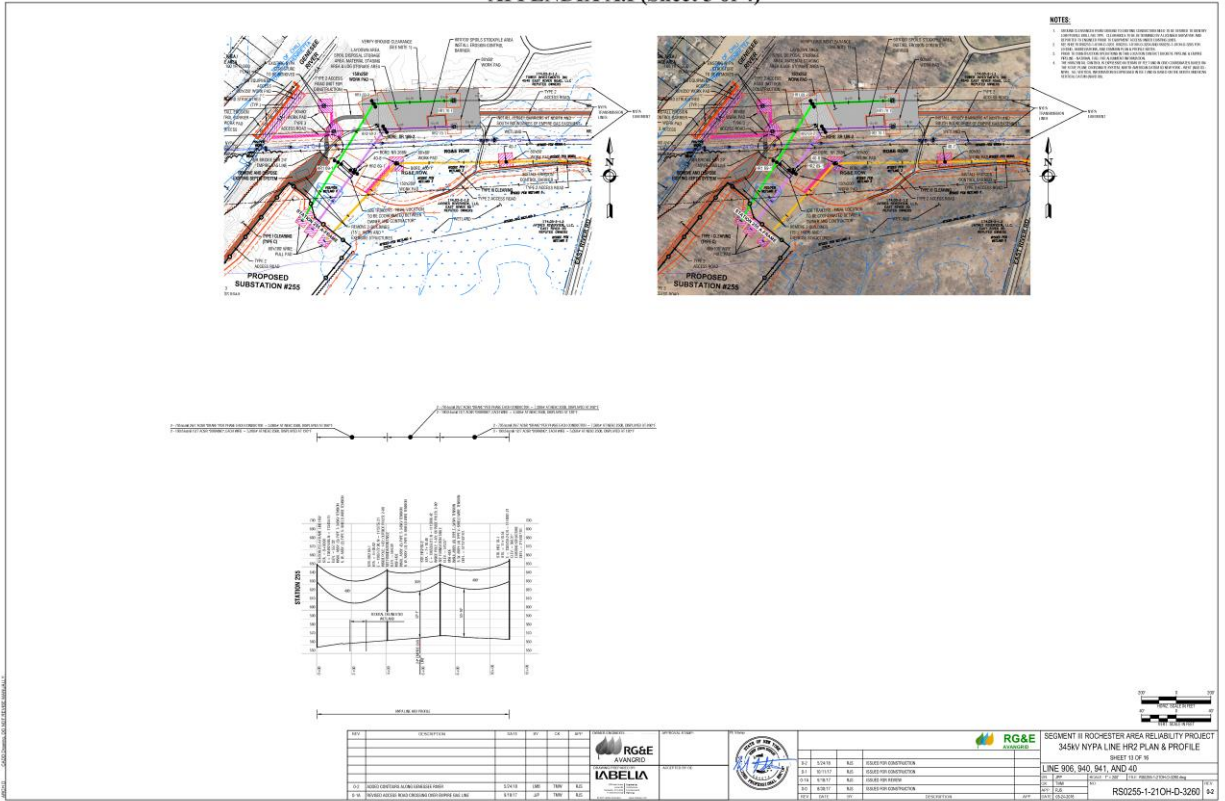
[REDACTED]

[REDACTED]	
[REDACTED]	[REDACTED]
[REDACTED]	
[REDACTED]	[REDACTED]
[REDACTED]	[REDACTED]
[REDACTED]	[REDACTED]
[REDACTED]	[REDACTED]
[REDACTED]	[REDACTED]
[REDACTED]	[REDACTED]
[REDACTED]	[REDACTED]
[REDACTED]	[REDACTED]
[REDACTED]	[REDACTED]

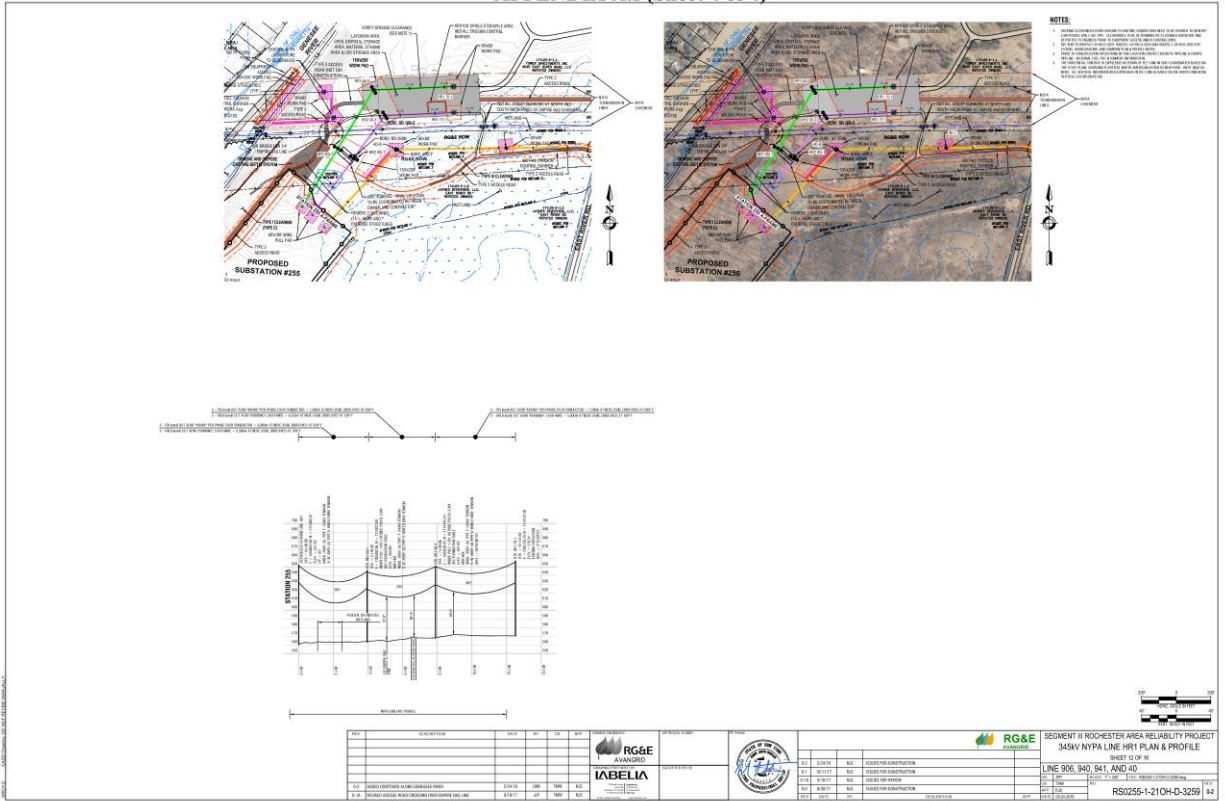
■	████████████████████
■	████████████████████
■	████████████████████

[illegible]

APPENDIX A.I (Sheet 3 of 4)



APPENDIX A.I (Sheet 4 of 4)



[illegible]

CADD Drawing, DO NOT REVISE MANUALLY.

[illegible]

11-T-0534 EXHIBIT 109



Appendix A.IV (Sheet 1 of 2)

Connecting Transmission Owner Facility Study
Rochester Area Reliability Project Article VII
NYPA 345kV Aerial Transmission Line POI
to New Proposed RG Station 255

Rev.2: 09-14-2018
2 @ 345kV Line: Circuit - (4 lines at 1000' 2 Bundled Cond. = 24,000' of phase conductor
Install 8 New Structures - 8 @ 3 Pole DE's (Dead-Ends) Structure:
Conductor. ACSR Drake, 765 kcmil 26/7 Strand, 2 Conductors (Bundled) per Phase
Static Wires: 2 - OPGW RGE Standard, 2 Per Line 1000' x 2 x 4 - 8,000
No Distribution Underbuild

Item Description

		Weight Lb 1 Structure	Price/#	Unit Cost	Quantity	Total Cost	Total Weight Lb
New Poles							
345kV							
1	Single Phase Steel Pole & Static 80' DE 90 Deg., SS, Concrete Foundation	18,000	2.00	\$ 42,480	16	\$ 679,680	288,000
2	Single Phase Steel Pole- No Static 80' DE 90 Deg., SS, Concrete Foundation	14,000	2.00	\$ 33,040	8	\$ 264,320	112,000
3	Steel Pole H-Frame - 80' Tangent, SS, Concrete Found	19,000	2.00	\$ 44,840	0	\$ -	-
Total Pole Cost & Weight					24	\$ 944,000	400,000

		Weight/Ft	Line Length	Unit Cost	Length Ft	Total Cost	
Wire							
4	Bundled Drake Cond. 795 ACSR 26/7 Install Length Pls 5%, 2 per phase	1.041	4,000	\$ 1.89	24,000	\$ 45,312	24,979
5	3/8" EHS Steel Static Install Length Plus 5%	0.262	0	\$ 0.89	0	\$ -	0
6	OPGW .638" Static Install Length Plus 10%, 2 per line	0.416	4,000	\$ 2.60	8,000	\$ 20,768	3,326
Total Wire Cost & Weight						\$ 66,080	28,305

		Quantity Per Str.	Cost Each	Cost Per Str.	Total Quantity	Total Cost	
Insulators & Hardware							
7	345 kV Suspension Porcelain Insulator AY I-String for Tangent Pole	3	\$ 2,124	\$ 6,372	0	\$ -	
8	345 kV Strain Porcelain Insulator AY for Single Phase Deadend Poles (4 Strings)	2	\$ 4,366	\$ 8,732	48	\$ 209,568	
9	345 kV Strain Porcelain Insulator AY for Sub. Take-Off Frame	3	\$ 4,366	\$ 13,098	12	\$ 52,392	
10	345 kV Jumper Insulator AY-Susp. Off Arm with Hold Down Wts, 2x3	3	\$ 2,596	\$ 7,788	24	\$ 62,304	
11	345 kV Jumper Insulator AY-Susp. Off Arm Sub Take-Off Frame, 2x2	3	\$ 2,596	\$ 7,788	12	\$ 31,152	
12	3/8" EHS Steel Static Wire Hardware	0	\$ 177	\$ -	0	\$ -	
13	OPGW Static Wire Hardware DE's (12) include Take-Off Bays (8)	2	\$ 354	\$ 708	20	\$ 7,080	
14	OPGW Splice Cases and Misc. Hardware 2 per line x 4 lines = 8	1	\$ 2,950	\$ 2,950	8	\$ 23,600	
15	Misc Hardware Per Pole	1	\$ 89	\$ 89	16	\$ 1,416	
16	Misc Hardware Per Pole H-Frame	2	\$ 177	\$ 354	0	\$ -	
17	Speed Grip Spaces Every 150' plus 3/loop = 27 + 72 + TO Bay Jumpers (24)	1	\$ 89	\$ 89	123	\$ 10,886	
18	Dampers for Conductors - Stockbridge Type 1/Span/Phase x 2 Bundle	1	\$ 100	\$ 100	72	\$ 7,222	
19	Dampers for Static & OPGW Wires 1/Span/Static/2 Statics	1	\$ 83	\$ 83	24	\$ 1,982	
20	Grounding Hardware Per H-Frame 2-Pole	1	\$ 1,003	\$ 1,003	0	\$ -	
21	Grounding Hardware Per Single Pole	1	\$ 502	\$ 502	24	\$ 12,036	
Total Hardware Cost						\$ 419,638	

		Cu Yards 1 Found	Unit Cost Cu/Yd	Price Per Found.	Total Qty of Found.	Total Found. Installation Cost	Total Cu.Y Cond.
Foundation Quantities (Includes 1' Reveal)							
22	Concrete Pier Foundation 6x20 H-Frame	21.0	\$ 1,003	\$ 21,063	0	\$ -	0
23	Concrete Pier Foundation 6x25	26.3	\$ 1,003	\$ 26,379	0	\$ -	0
24	Concrete Pier Foundation 8x20 Center Pole 3 Pole DE	37.2	\$ 1,003	\$ 37,312	8	\$ 298,493	297.6
25	Concrete Pier Foundation 8x25 Outside Poles 3 Pole De	46.6	\$ 1,003	\$ 46,740	16	\$ 747,837	745.6
Total Foundation Material Cost & Cu. Yd.					24	\$ 1,046,330	1043.2

		Unit Cost	Quantity	Total Cost	
Aerial Construction Labor Costs					
26	Install H Frames on Pier Foundations - 2 Poles per structure	\$ 18,880	0	\$ -	
27	Install 3 Pole DE on Pier Foundations - 3 Poles per structure	\$ 35,400	8	\$ 283,200	
28	Frame H Fame Structure	\$ 11,800	0	\$ -	
29	Frame 3 Pole DE Poles	\$ 21,240	8	\$ 169,920	
30	Frame DE Take-Off Structures	\$ 7,080	4	\$ 28,320	
31	Install/replace wire (Conductor) Drake ACSR 795 26/7 (Bundled)	\$ 5	24000	\$ 113,280	
32	Install/replace wire (Static) 3/8" EHS Steel	\$ 4	0	\$ -	
33	Install/replace (OPGW Static) 0.504 Dia	\$ 4	8000	\$ 28,320	
34	Clip-in & Sag wire (Conductor) Drake ACSR 795 Per Cond. (Per Str.)	\$ 2,360	32	\$ 75,520	
35	Clip-in & Sag wire (Static) 7/8 AW (Per Str.)	\$ 826	0	\$ -	
36	Clip-in & Sag wire (OPGW Static) (Per Pole) x 2 Plus 8 TO Frame Loc. =32	\$ 1,416	32	\$ 45,312	
37	Rock Drilling @ \$500/Ft (Assume 75' x6' Dia) Plus \$15,000 Equipment	\$ 61,950	0	\$ -	
38	Equipment Rentals	\$ 88,500	1	\$ 88,500	
39	Miscellaneous Construction Costs Outages Considerations	\$ 118,000	1	\$ 118,000	
40	Mobilization Cost	\$ 88,500	1	\$ 88,500	
Total Construction Labor Costs				\$ 1,038,872	

		Unit Cost	Quantity	Total Cost	
Engineer & Survey Labor Costs					
41	Transmission Line Engineering	\$ 202,960	1	\$ 202,960	
42	NYPA Engineering Supervision Meetings Coordinator	\$ 88,500	1	\$ 88,500	
43	Survey & Mapping Requirements for the T-Line (LiDAR Plus Field Staking)	\$ 38,940	1	\$ 38,940	
44	Geotechnical Borings & Report	\$ 15,576	1	\$ 15,576	
45	Construction Yard Lease	\$ -	1	\$ -	
46	Tree Trimming and/or removal. R/W Grubbing	\$ -	1	\$ -	
47	Wetland matting costs (Estimated No. poles & length to mat=Pending)	\$ 11,800	1	\$ 11,800	
48	R/W or Easement Costs Associated with Engineering Support	\$ 5,900	1	\$ 5,900	
49	Ground Restoration per square foot @ 50' R/W	\$ 4,720	1	\$ 4,720	
50	Construct/Remove Temporary Road				
Total Engineer & Survey Labor Costs				\$ 368,396	

Appendix A.IV (Sheet 2 of 2)

Connecting Transmission Owner Facility Study
Rochester Area Reliability Project Article VII
NYPA 345kV Aerial Transmission Line POI
to New Proposed RG Station 255

Overhead Expenses

51	Sales Tax (0%)	\$	-
52	Stones Expense (0%)	\$	-
53	Indirect Payroll (50%)	\$	1,941,797.97
54	Transportation (0%)	\$	-
55	Overheads (tools & work equipment) 1%	\$	38,835.96

Total Overhead Expenses **\$ 1,980,634**

Total Project Installed Cost **\$ 5,863,949**

Temporary & Removal Costs

		Cost HR	MH	Cost
56	Remove 6 - 345 kV Towers - 7 Men 8 days with equipment	\$ 236	488	\$ 115,168
57	Remove 24 Foundations - 5 Men 5 days with equipment 4' below grade	\$ 236	200	\$ 47,200
58	Restore ground to condition of surrounding area - 5 Men 4 day with equipment	\$ 236	160	\$ 37,760
59	Remove 3 spans of 345 kV conductor - 5 Men 4 days with equipment	\$ 236	160	\$ 37,760
60	Temporary 345 kV Rearrangement - 5 Men 5 days with equipment	\$ 236	200	\$ 47,200

Total Project Removal Costs **\$ 285,088**

Total Work by RG&E **\$ 7,932,258**

Total Work by NYPA **\$ 400,065**

Total Project - 2018 Dollars **\$ 8,332,323**

Assumptions:

- 1) No Permits Included in Estimate
- 2) No RGE Loadings included in this estimate
- 3) Soils Average Quality, Rock length as estimated, Water Table 15'-30' Below Grade. No Expansive Clay or Pumping Sand
- 4) TL Structures Galvanized Steel, All Str's. Self-Supporting with no Guys; Sub. TO Str. Mat & Found. Not Included but TL Hardware & Wire at TO is include
- 5) Off Cost Generation Not Included
- 6) Cost Based on Preliminary Layout Drawing-Any Modifications May Revise Cost
- 7) Fiber Optic Static Wires (2) Required on this Project
- 8) Construction Costs included in Lieu of Contractor Estimate-Substitute Contractor Cost for Numbers Provided Above if Possible

The estimate used the following rates provided by NYPA:

Sales Tax:	0.0%
Stores Expense:	0.0%
Indirect Payroll:	50.0%
Transportation:	0.0%
Overheads & Contingencies:	30.0%
Overheads (Tools & Work Equipment)	1.0%
Contingencies	29.0%
AFDC:	NA

Appendix A.V (Sheet 1 of 2)

Substation Cost Estimate

Substation:	Niagara
Division:	NYPA
Project Description:	Rochester Reliability Project: Add 345kV wave trap and CCVT for power line carrier to Station 255.
RGE Labor Rate	47.25
In-Service Date:	9/8/2015
Contractor Labor Rate (per O'Connell Electric Quote)	125.00

IN THOUSANDS

	Unit Labor	Total Labor	Unit Cost							
	Quantity	Hours	Hours	(\$1000)	Labor	Material	Contract	Transp	Other	Total
Major Equipment										
Contractor Labor										
345kV CCVT w/ accessories	1	20	20	\$ 9.7		9.75	\$ 2.5			\$ 12.2
345kV CCVT w/o accessories- Existing to be re-located	2	40	80		-\$	\$ 10.0				\$ 10.0
345kV Line Trap	1	20	20	\$ 20.0		20.05	\$ 2.5			\$ 22.5
Engineering Contractor	1		0		-\$	\$ 100.0				\$ 100.0
Mobilization / Demobilize	1	240	240			\$ 30.0				\$ 30.0
Niagara Labor										
Corporate Engineering	1		0		-\$	\$ -				\$ -
On-site Supervision	1	480	480		22.75	\$ -				\$ 22.7
Project Management	1		0		-\$	\$ -				\$ -
Commissioning and Testing	1	0	0		-\$	\$ -				\$ -
			480		22.7	29.7	145.0	\$ -	\$ -	\$ 197.4
Sub-Total Equipment										
In-Ground										
Foundations					-\$	4.0	\$ 4.4			\$ 8.4
Conduit and Control Cable					-\$	12.0	\$ 6.8			\$ 18.8
Grounding					-\$	0.9	\$ 0.6			\$ 1.5
					-\$	16.8	11.8	\$ -	\$ -	\$ 28.6
Sub-Total In-Grd Above										
Ground										
Structures			162		7.7	\$ -	\$ 20.3			\$ 27.9
Buswork					-\$	6.3	\$ 6.1			\$ 12.4
			162		7.7	6.3	26.3	\$ -	\$ -	\$ 40.3
Sub-Total Above Grd										
Percents										
Misc Materials	5%					\$ 2.6				\$ 2.6
Misc Labor	10%				\$ 3.0		\$ 18.3			\$ 21.3
Travel Time (X hrs/person/day)		2.0	161		\$ 7.6					\$ 7.6
Sales Tax	0%								-\$	\$ -
Stores Expense	0%								-\$	\$ -
Indirect Payroll	50.00%								15.25	\$ 15.2
Transportation	0%							\$ -		\$ -
Overheads	1%								3.15	\$ 3.1
Contingency	25%								90.85	\$ 90.8
Field Supervision									-\$	\$ -
			161		10.6	2.6	18.3	\$ -	\$ -	\$ 140.7
Sub-Total Overheads										
AFDC	0.00%									\$ -
Start Date	7/28/2015									
Overall Total										
			803		41.0	55.5	201.4	\$ -	109.1	\$ 407.0

Denotes Formulas. Do Not Enter Data.

Denotes Data Entry Fields

Red text denotes RGE Estimate # 2132

Green text denotes SECo Estimate

Instrument Transformer and Wave trap costs per Axiom quote dated 3/11/2011.

Sales Tax, Stores Expense, Indirect Payroll, Transportation, AFDC rate is per NYPA 3/15/2012 comments on Engineering Notes.

Appendix A.V (Sheet 2 of 2)

Substation:		Substation Cost Estimate								
Division:		NYPA								
Project Description:		Protection and Control for 345kV Source Art. VII application								
RG&E Labor Rate		\$ 47.25	In-Service Date:						9/8/2015	
Contractor Labor Rate		\$ 125.00								
IN THOUSANDS										
	Quantity	Unit Price	Labor Hours	Material Cost	Contract	Transp	Other	Total		
Major Equipment										
Bus Relaying		\$ 19.00	0	\$ -	\$ -			\$ -		
XFMR Relaying		\$ 19.00	0	\$ -	\$ -			\$ -		
Line Relaying	2	\$ 32.00	128	\$ 64.0	\$ 16.0			\$ 80.0		
Backup Relaying		\$ 12.00	0	\$ -	\$ -			\$ -		
Breaker Relay/Ctrl	2	\$ 14.00	128	\$ 28.0	\$ 16.0			\$ 44.0		
IDRs/Ars	6	\$ 2.50	48	\$ 15.0	\$ 6.0			\$ 21.0		
Blank Panels		\$ 5.00	0	\$ -	\$ -			\$ -		
Comm/RTU Panels	1	\$ 8.00	72	\$ 8.0	\$ 9.0			\$ 17.0		
SONET POTT Equip.		\$ 10.00	0	\$ -	\$ -			\$ -		
PLC POTT Equip.		\$ 29.00	0	\$ -	\$ -			\$ -		
Tone POTT Equip.	2	\$ 55.00	96	\$ 110.0	\$ 12.0			\$ 122.0		
SONET IMUX Equip.	1	\$ 10.00	72	\$ 10.0	\$ 9.0			\$ 19.0		
Fiber Patch Panels		\$ 8.00	0	\$ -	\$ -			\$ -		
Routers/Ethernet Sw.	1	\$ 10.00	24	\$ 10.0	\$ 3.0			\$ 13.0		
RTU & I/O Equip.	1	\$ 20.00	72	\$ 20.0	\$ 9.0			\$ 29.0		
HMI	1	\$ 5.00	24	\$ 5.0	\$ 3.0			\$ 8.0		
UPS & Inverter	1	\$ 5.00	24	\$ 5.0	\$ 3.0			\$ 8.0		
GPS Receivers	1	\$ 5.00	24	\$ 5.0	\$ 3.0			\$ 8.0		
Billing Meters		\$ 5.00	0	\$ -	\$ -			\$ -		
LTC Controllers		\$ 12.50	0	\$ -	\$ -			\$ -		
Modems	1	\$ 3.00	24	\$ 3.0	\$ 3.0			\$ 6.0		
Power Switch		\$ 5.00	0	\$ -	\$ -			\$ -		
POE injector		\$ 5.00	0	\$ -	\$ -			\$ -		
DVR & Equip.		\$ 10.00	0	\$ -	\$ -			\$ -		
Net Controller		\$ 5.00	0	\$ -	\$ -			\$ -		
Wireless Controllers		\$ 5.00	0	\$ -	\$ -			\$ -		
Intrusion Detector		\$ 10.00	0	\$ -	\$ -			\$ -		
Teleco Equip.		\$ 7.50	0	\$ -	\$ -			\$ -		
Test & Commission			0	\$ -	\$ -			\$ -		
Ctrl. Eq. Allowance	1	2%	96	\$ 7.5	\$ 12.0			\$ 19.5		
Prot. Eq. Allowance	1	3%	128	\$ 11.3	\$ 16.0			\$ 27.3		
Comm. Eq. Allowance	1	4%	96	\$ 15.0	\$ 12.0			\$ 27.0		
Eng. Allowance		0%		\$ -	\$ -			\$ -		
On-Site Supervision	1		0	\$ -	\$ -			\$ -		
Total Equipment			1056	\$ -	\$ 316.8	\$ 132.0	\$ -	\$ 448.8		
				0%	71%	29%	0%	0%		
In-Ground										
				\$ -				\$ -		
				\$ -				\$ -		
				\$ -				\$ -		
Sub-Total In-Grid			0	\$ -	\$ -	\$ -	\$ -	\$ -		
Above Ground										
				\$ -				\$ -		
				\$ -				\$ -		
Sub-Total Above Grid			0	\$ -	\$ -	\$ -	\$ -	\$ -		
Percents										
Misc Materials	5%			\$ 15.9				\$ 15.9		
Misc Labor	10%			\$ -				\$ -		
Travel Time (X Hr/person/day)	2.0	264	\$ 12.5					\$ 12.5		
Sales Tax	0%						\$ -	\$ -		
Stores Expense	0%						\$ -	\$ -		
Direct Payroll	50.00%						\$ -	\$ -		
Transportation	0%					\$ -		\$ -		
Overhead	1%						\$ 4.8	\$ 4.8		
Contingency	19%						\$ 90.6	\$ 90.6		
Field Supervision							\$ -	\$ -		
AFDC	0.00%						\$ -	\$ -		
Start Date	7/28/2015									
Overall Total			1,320	\$ 12.5	\$ 332.6	\$ 132.0	\$ -	\$ 572.5		

Restated

Work by RG&E \$ 1,152,542

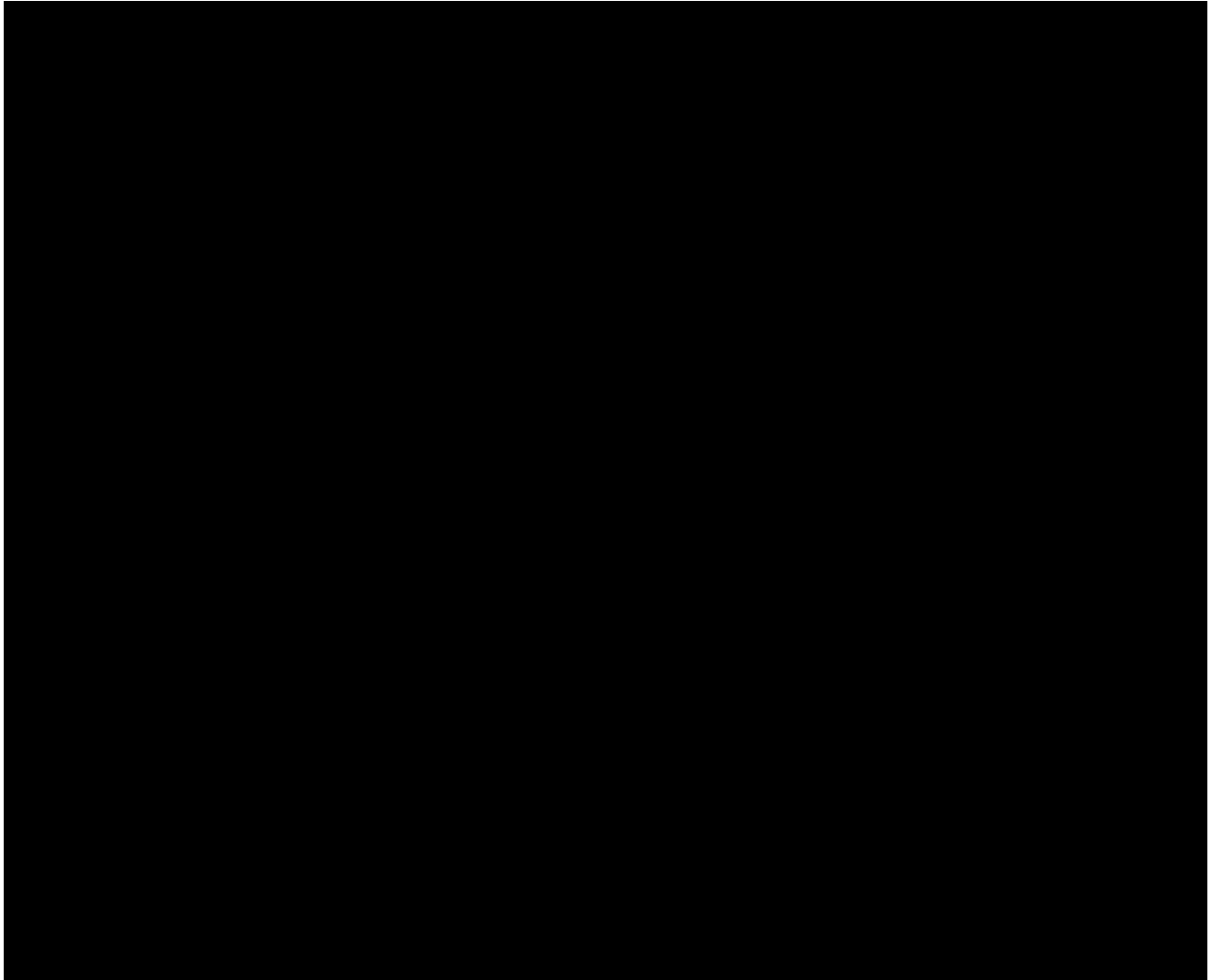
Work by NYPA \$ 1,930,000

Total \$ 3,082,542

Appendix A.VI

One-Line

“Appendix A.VI of this Interconnection Agreement Contains Critical Energy Infrastructure Information -- Do Not Distribute to Unauthorized Individuals”



Operating and Maintenance Expenses

Pursuant to Section 10.5 of this Agreement, RG&E shall pay the reasonable expenses (including overheads) for the operation, maintenance, repair and replacement of Connecting Transmission Owner's Attachment Facilities. Such expenses are calculated as follows:

- a) Contractor expenses for labor, equipment and materials. These expenses shall be invoiced as the actual amount of the Contractors' invoices. Connecting Transmission Owner shall also be entitled to a fee of 5 % of such amount(s).
- b) Connecting Transmission Owner's labor, craft and salaried personnel directly working on the operation, maintenance or repair of the Connecting Transmission Owner Attachment Facilities. These expenses shall be invoiced on the basis of Connecting Transmission Owner's standard labor rate times the number of hours worked (including adjustment for overtime hours, if applicable). Such standard rate is subject to change in accordance with Connecting Transmission Owner's normal budgeting practices.
- c) Equipment and materials purchased by the Connecting Transmission Owner (other than those covered under subsection (a), above). These expenses shall be invoiced on the basis of the actual cost of such material. Connecting Transmission Owner shall also be entitled to a fee of 15% of such amount(s).
- d) Use of vehicles and construction equipment. These expenses shall be invoiced at Connecting Transmission Owner's cost. Connecting Transmission Owner shall also be entitled to a fee of 10% of such amount(s).
- e) Miscellaneous expenses (e.g. local utility charges for power; local telephone/communication fees; other fees such as FAA licenses). These expenses shall be invoiced at Connecting Transmission Owner's cost. Connecting Transmission Owner shall also be entitled to a fee of 5% of such amount(s).

Transfer of Property:

Upon completion of construction, testing, and acceptance by the Connecting Transmission Owner of the CTOAFs and SUFs, RG&E will convey to the Connecting Transmission Owner permanent easements or other agreements as required by the Connecting Transmission Owner to the CTOAFs and SUFs constructed thereon, free and clear of any liens and encumbrances.

APPENDIX B – MILESTONES

MILESTONES

1. Selected Option Pursuant to Section 5.1.2

RG&E exercises its Option to Build pursuant to Article 5.1.2 of the Interconnection Agreement as memorialized in the Milestones schedule in this Appendix B.

2. Milestones

Task Name	Start	Finish	Duration
RARP - Interconnection Related Milestones	Mon 10/9/17	Mon 12/28/20	1,176 days
Overall	Fri 10/20/17	Mon 12/28/20	1,165 days
File EMCP for Segment III	Fri 10/20/17	Fri 10/20/17	0 days
Receive Approval for EMCP Segment III	Mon 8/27/18	Mon 8/27/18	0 days
Execute Interconnection Agreement with NYPA	Fri 6/28/19	Fri 6/28/19	0 days
Final Connection and Energization of ST 255 and All Connecting Substations and Transmission Lines	Mon 12/28/20	Mon 12/28/20	0 days
Substation (Dates Focus on ST 255)	Mon 10/9/17	Mon 12/28/20	1,176 days
Start Substation Engineering Detailed Design	Mon 10/9/17	Mon 10/9/17	0 days
Finish Substation Engineering Detailed Design	Fri 7/29/19	Fri 7/29/19	0 days
Start Construction for Substation	Mon 10/15/18	Mon 10/15/18	0 days
Finish Construction for Substation	Mon 12/28/20	Mon 12/28/20	0 days

Start Local Commissioning Activities for Substation	Tues 3/24/20	Tues 3/24/20	0 days
Finish Local Commissioning Activities & Energize Substation (Connection to ST 80 via TL 40)	Mon 10/19/20	Mon 10/19/20	0 days
NYPA Transmission Lines (Interconnection)	Mon 1/8/18	Mon 11/30/20	1,057 days
Start Transmission Line Detailed Design	Mon 1/8/18	Mon 1/8/18	0 days
Finish Transmission Line Detailed Design	Fri 6/1/18	Fri 6/1/18	0 days
Start Construction for Interconnection Towers (Outside NYPA ROW)	Mon 7/20/20	Mon 7/20/20	0 days
Finish Construction for Interconnection Towers (Outside NYPA ROW)	Tues 12/08/20	Tues 12/08/20	0 days
Start Commissioning Activities for Transmission Lines (Includes Tower Construction Inside NYPA ROW)	Tues 10/20/20	Tues 10/20/20	0 days
Finish Commissioning Activities for Transmission Lines	Mon 11/30/20	Mon 11/30/20	0 days
NYPA Niagara PLC Construction	Mon 9/3/18	Fri 11/27/20	844 days
Start Substation Engineering Detailed Design	Mon 9/3/18	Mon 9/3/18	0 days
RG&E Sends NYPA IFC drawings	Fri 6/28/19	Fri 6/28/19	0 days
Finish Substation Engineering Detailed Design (with NYPA approval)	Fri 8/30/19	Fri 8/30/19	0 days
Start Construction for Substation	Tues 6/30/20	Tues 6/30/20	0 days
Finish Construction for Substation	Fri 11/13/20	Fri 11/13/20	0 days
NYPA Start Commissioning (Fan Building Work)	Mon 10/12/20	Mon 10/12/20	0 days

NYPA Complete Commissioning (Fan Building Work)	Fri 11/27/20	Fri 11/27/20	0 days
--	-------------------------	-------------------------	---------------

The following notes apply to all work performed as required by this Agreement or by Connecting Transmission Owner:

- A. Connecting Transmission Owner work durations do not include holiday work; if a NYPA holiday occurs during an event on these Milestones, then effected dates shall be extended day-for-day.
- B. All Connecting Transmission Owner outage durations necessary to interconnect Developer's project are dependent on favorable weather conditions where the work is being performed. Unfavorable weather conditions may extend the length of such outage durations.
- C. Transmission System emergencies take precedence over all work and could significantly impact the schedule and durations.
- D. Connecting Transmission Owner schedules its resources months in advance, and its ability to reschedule manpower is limited by resource allocation to other Connecting Transmission Owner projects and tasks. If Developer misses a scheduled Milestone that directly affects performance of a Connecting Transmission Owner's Milestone, performance or completion of Connecting Transmission Owner's relevant Milestone may be delayed until the Connecting Transmission Owner can reschedule its manpower to work on the assigned task.
- E. The Closeout/Turnover Package shall consist of the following: As-built drawings, Punchlist, Record Drawings, all equipment, QA/QC installation, commissioning, Engineer of Record Professional Engineer certification, color markup of design, drawings and warranties, and all documentation necessary for demonstrating compliance with applicable NERC Reliability Standards and NPCC directories.

- F. To the extent not inconsistent with the terms of this Agreement or the NYISO OATT, RG&E shall be responsible for all fines and penalties imposed on Connecting Transmission Owner by a Governmental Authority or Applicable Reliability Council directly caused by RG&E action or inaction relating to, and occurring prior to the transfer of care, custody, and control by RG&E to the Connecting Transmission Owner of, the Connecting Transmission Owner's Attachment Facilities or Stand Alone Network Upgrade Facilities.

APPENDIX C – INTERCONNECTION DETAILS

The scope of the RARP involves the installation of a new Bulk Power Station Transmission Reinforcement Project (the “Project”) to bring the NYPA 345kV cross-states lines into the new Station 255. The new station will have a breaker-and-a-half setup for the 345kV bus. Two 345/115kV 448MVA transformers will tie the 345kV bus into the 115kV breaker-and-a-half bus. There will be two approximately 300MVA 115kV lines off of the 115kV bus. The first line will tie into the western part of the RGE 115kV system at Station 418. The second line will tie into the 115kV system toward downtown Rochester at Station 23. This project will provide source capability into the RGE system to allow for the loss of other sources to the RGE system, while also providing the targeted 115kV delivery points loading relief on existing 115kV lines.

The Project as originally proposed reduced the thermal transfer limits of Dysinger East and West Central interfaces by approximately 350 MW (~14% of interface thermal transfer limit). To account for this impact, a third 345 kV line (Circuit 40) from the new Station 255 to Station 80 was included. The Project as currently proposed decreases the thermal transfer limits of Dysinger East and West Central interfaces by approximately 48 MW. Based on the System Impact Study results the Dysinger East and West Central interface transfers are voltage limited, and the addition of Project increases the voltage transfer limits by approximately 100 MW.

The Project’s transmission scope includes work for the construction of three new RG&E Transmission Lines (345kV Circuit 40: 1.3 miles, 115kV Circuit 940: 10.5 miles & 115kV Circuit 941: 12.0 miles) , the relocation of one 115 kV RG&E Transmission Line (Circuit 906: 2.5 miles) & the relocation of the aforementioned NYPA 345kV cross-states lines.

Transfer of Ownership Matrix

The following matrix is a broad overview of the transfer of ownership after the completion of the project.

TRANSFER OF OWNERSHIP MATRIX		
TITLE	NYP&A	RGE/AVNG
Niagara SP&C SOW	✓	
Niagara Communication & Protection SOW	✓	
Niagara CCVT & Line Trap	✓	
Niagara In Ground & Above Ground SOW	✓	
Circuit NH-2 from the Point of Interconnection to St. 255.	✓	
HR-2 from the Point of Interconnection to St. 255.	✓	
SH 1-39 from the Point of Interconnection to St. 255.	✓	
HR-1 from the Point of Interconnection to St. 255.	✓	
Circuit 40		✓
Circuit 940		✓
Circuit 941		✓
St. 255		✓
St. 80		✓

Responsibility Matrix

The following matrix is a broad overview of Project responsibilities.

RESPONSIBILITY MATRIX		
TITLE	NYPA	RGE/AVNG
Niagara SP&C Engineering	✓	
Niagara Communication & Protection Work	✓	
Niagara CCVT & Line Trap Installation		✓
Niagara In Ground & Above Ground Engineering		✓
Installation of Communication Cable (Fiber or Copper) at NIA between S&R Bldg and Fan Bldg for the T1 connection to JMUX in Fan Bldg		✓
Switchyard Access Permit		✓
Outage Coordination	✓	✓
Maintenance on Future Work	✓	
Specification(s) on Panels	✓	
Procurement & delivery of Panels		✓
FERC Compliance	✓	✓
Transmission Line Design		✓
Transmission line material supply		✓
Transmission line construction		✓
Transmission line future maintenance	✓	

APPENDIX D – SECURITY ARRANGEMENTS DETAILS

Infrastructure security of New York State Transmission System equipment and operations and control hardware and software is essential to ensure day-to-day New York State Transmission System reliability and operational security. The Commission will expect the NYISO, all Transmission Owners, and all other Market Participants to comply with the recommendations offered by the President’s Critical Infrastructure Protection Board and, eventually, best practice recommendations from the electric reliability authority. All public utilities will be expected to meet basic standards for system infrastructure and operational security, including physical, operational, and cyber-security practices.

APPENDIX E – COMMERCIAL OPERATION DATE

[Date]

[NYISO]

[Connecting Transmission Owner Address]

Re: _____ Transmission Facility

Dear _____:

This letter confirms that **[RG&E]** commenced Commercial Operation of the Transmission Facility, effective as of **[Date]**.

Thank you.

[Signature]

[RG&E Representative]

APPENDIX F – ADDRESSES FOR DELIVERY OF NOTICES AND BILLINGS

Notices:

Connecting Transmission Owner:

Philip Toia - Senior Vice President of Power Supply

New York Power Authority

Clark Energy Center

6250 Glass Factory Road

Marcy, NY 13403-8236

Phone: (315) 792 8236

Philip.toia@Nypa.gov

RG&E:

Rochester Gas and Electric Corporation

Timothy J. Lynch – Director

18 Link Drive

P.O. Box 5224

Binghamton, NY 13902-5224

(585) 484 6352

TJLynch@nyseg.com

Billings and Payments:Connecting Transmission Owner:

Philip Toia - Senior Vice President of Power Supply

New York Power Authority

Clark Energy Center

6250 Glass Factory Road

Marcy, NY 13403-8236

Phone: (315) 792-8236

Philip.toia@Nypa.gov

Or wire payment to:

New York Power Authority

Operating Funds c/o

J.P. Morgan Chase, N.A.

ABA No. 021000021

Account No. 573-804206

RG&E:

Rochester Gas and Electric Corporation

Todd Foster – Manager – Billing and Risk Management

18 Link Drive

P.O. Box 5224

Binghamton, NY 13902-5224

(585) 484 6883

TLFoster@nyseg.com

ALTERNATIVE FORMS OF DELIVERY OF NOTICES (TELEPHONE, FACSIMILE OR EMAIL):

Connecting Transmission Owner:

Philip Toia - Senior Vice President of Power Supply

New York Power Authority

Clark Energy Center

6250 Glass Factory Road

Marcy, NY 13403-2836

Phone: (315) 792 8236

Philip.toia@Nypa.gov

RG&E:

Rochester Gas and Electric Corporation

Julie Mahoney – Program/Project Manager

18 Link Drive

P.O. Box 5224

Binghamton, NY 13902-5224

(585) 484 6306